



Spring Valley Ranch & Cattle

402-684-3308 • svr-angus.com • Ben Andrews

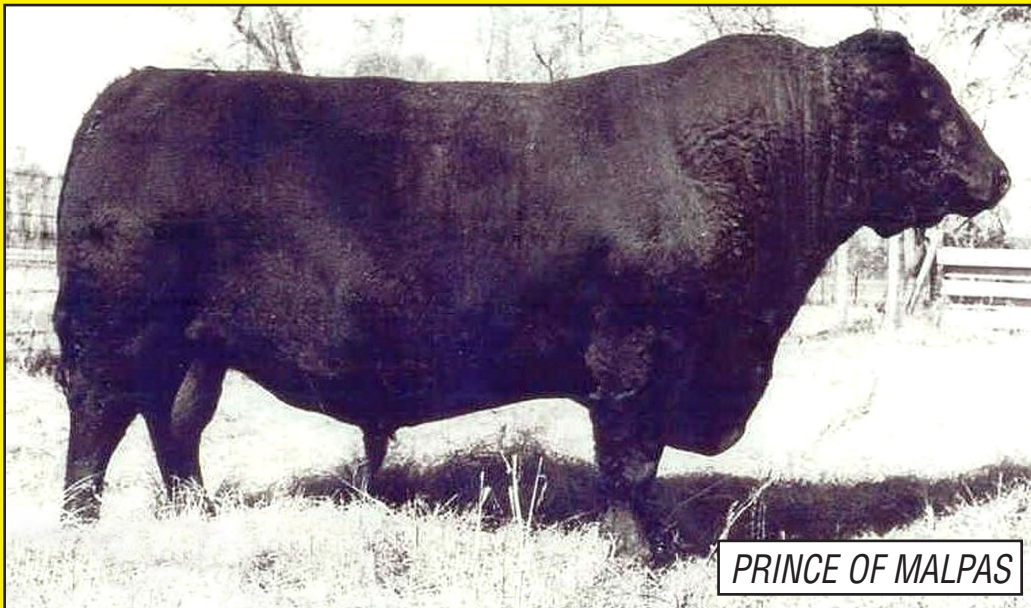
Functional Grass Cattle That Consistently Grade Choice or Better!

Selling 90 Two-Year-Old Registered Black Angus Bulls

7 Sons of Prince of Malpas

LARGEST NUMBER TO SELL IN MODERN HISTORY

**Sons of F0203; Emulous Pride 70; Sinclair Bush Ranger;
Sinclair Express 6V47 and SVR Bulls**



Friday, February 7, 2020 • 1:00 p.m. (CST)
Burwell Livestock Market at Burwell, Nebraska

SALE BOOK, VIEWING & BIDDING: DVAUCTION.COM

SALE BOOK: ANGUS.ORG/SALEBOOKS

SALE BOOK & VIEWING: SVR-ANGUS.COM



Spring Valley Ranch & Cattle L.L.C.
85445 444th Ave.; Bassett, NE 68714
402-684-3308 | www.svr-angus.com
Ben and Sherry Andrews | Frank and Anne Taylor

These SVR Bulls will build and maintain the optimum, profitable, low input cow herd for commercial, registered and grass producers by passing on the essential functional traits of the traditional Angus breed.

The Bulls will sire moderate, long-lived replacement females that have structural integrity, excellent teat and udder structure, good mothering ability and docility, and which will breed back with regularity. These functional traits are essential for the profitable cow herd.

The Bulls' commercial sale calves – steers and heifers – will be sale toppers, improving profitability.

The registered producer will integrate these Bulls into its herd to concentrate functional traits that are important for the profit conscious seedstock producer.

The Bulls' progeny will perform well for the grass-fed and grass-finished producer. Our grass-finished "retail" customers come back year after year, and their numbers are increasing.

We focus upon "maternal matings", not "terminal matings." In the January 3, 2019 edition of *Beef* magazine, Burke Teichert clearly distinguished between the two:

... I have become convinced that most of us ranchers have been using terminal matings across our entire herd, except for heifers, since the early 70s when the continental breeds started to arrive in the U.S. It was an easy way to get a nice increase in weaning weight.

[Because we] were making terminal matings. . . cow size and milk production kept increasing. And stocking rate was decreasing or purchased feed was increasing.

It is easy to find good bulls for terminal matings. Current EPDs lend themselves well to selection for growth and carcass traits.

Now, where are the bulls for the maternal breeders who are making their own replacement heifers, perhaps with the idea of having some bred cows to sell? ***These bulls are difficult to find.***

Fertility and longevity along with the ability to produce an acceptable calf are really what we are looking for in good cows. ***Bulls that make that kind of cow are hard to find.***

Bulls that make good cows are easy to find...they're in this sale!

We listen to our customers who demand uniform and functional cattle, which our Bulls will assure. After all, the highest prices are usually paid for consistently uniform, good cattle. These Bulls will sire uniform, functional, good, moderate-framed, thick, low input cattle.

One of our customers fed 100 steers based on 100% SVR-genetics. The cattle hung at a uniform 829 pounds within only one standard deviation. 90% of them scored Choice or better. This type of performance is critical given the directive of one major packer that cattle must ***have a hanging weight of less than 1,000 pounds.***

Another measure we use to judge our program and its profitability is the price paid at the sale barn for our commercial calves – pedigreed calves that we determine not to include in our registered herd or sell as registered seedstock. Six out of the last eight years, our commercial calves have topped the Nebraska sales for either the week or the month of their sale.

In the two years we didn't top the market, our customers' calves beat ours. We're happy for them and proud that our Bulls are in their herds. Many of our other customers consistently top the sales in their areas. Ask them . . . they will be at the sale.

Seedstock producers have done well incorporating SVR genetics into their herds. Our Bulls have produced some of the highest selling sire groups and top selling replacement heifers for several seedstock producers. Our genetics are forming the basis of a significant portion of the replacement heifers and cowherds of several seedstock producers around the country.

These are our best Bulls to date. We know they will work well for you if, for no other reason, that each one of them calved on their own, unassisted on the Ranch.

The Sires. We have incorporated foundation Angus genetics because these genetics have been observed and measured over decades. We prefer this "hard, empirical" data to algorithmic equations that endeavor to predict the future. After all, such equations failed miserably during the Great Recession. Moreover, as with most projections, untested EPDs should "return to trend" or back to the middle. Thus, we use foundation genetics because they have already returned to trend.

Our AI and herd sires must be masculine and breed with vigor. They must sire outstanding animals that have excellent carcass quality, proper phenotype, quiet dispositions and pass on superior genetics. Although we stress maternal genetics, we use bulls that sire excellent males **and** females, and pass on the best functional traits of the traditional Angus breed.

Prince of Malpas is a foundation sire of the famous Wye herd. In *The Breed of Noble Bloods*, Jim Lingle, the master of Wye breeding, described Prince's extraordinary libido and then added:

I bought Prince because he had a lot of character. He had the attitude of a bull. I like the word *attitude*. Once every so often you have one like that born and you know it right away. You can always recognize him as far as you can see him.

Prince had scale, too . . . together with a lot of length. He was one of those bulls with an extra rib. He was well-balanced and had a world of handling quality with a good coat and good flesh covering; and he had big feet that let him walk out like a horse.

We look for accurate, historical data from the real world. You simply cannot obtain that data from bulls that have not been proven through at least three generations of progeny and that stand at a stud.

Foundation Females. Our Bulls stem from an exceptional set of Foundation Females and their daughters. After all, the mother cows are the foundation of traditional Angus genetics.

Sinclair Lady Ida 04F3 B154 was an outstanding 5522 daughter who was intensively linebred, with an inbreeding coefficient of 25.33%. She added base width, mothering ability, fleshing ability, range adaptability and teat and udder quality. She stamped her offspring. It is amazing that, despite her linebreeding, we could further linebreed her and still obtain excellent performance and phenotype.

SCC Enchantress 3F1 X412 is a 5522 daughter who produced SVR Revolution 3173 in the Hyline herd. Her grand dam came to Tom Elliott from the Coffey herd, which, we understand, Tom culled for only the finest teat and udder structure. Her dam produced N Bar Shadow and his brother, our herdsire, Sinclair Bush Ranger 9X16. Her sire, 5522, is the father of EXT. 3F1 is a great mother and very docile. We like her length of spine and frame. 3F1 has produced the highest selling SVR Bulls.

Queen Mother of Wye UMF 9141 stamps her cattle. The Wye program measured its animals through its matriarchs and their function. The leading matriarch was Blythe of Wye who was the top four-ton cow (she produced over four tons of weanlings during her 20-year life). 9141 is Blythe's granddaughter. 9141's calves are phenomenal. **9141** leads an outstanding battery of Wye cows, which transmit the essential functional traits of Aberdeen Angus cattle.

Copeland of Wye UMF 9753 is a descendant of the second leading four-ton cow from the Wye herd – Luria of Wye. Luria was second because she produced all heifer calves; Blythe produced all bull calves. A grand producer, **9753's** pedigree includes the famous Columbus of Wye. **Copeland of Wye UMF 9918** is a solid Wye cow whose pedigree has generations of proven Wye performance that simply works on the range.

Coleman Dixie Erica 143 was intensively line bred to Traveler. She and her offspring add more frame and power to Emulation cattle, without overpowering their maternal ability. Her progeny often top sales around the country.

BAX Aspen Lady 844-72 and BAX Alicia Queen 784-6310 were both sired by Paramount Ambush 2172 and are out of Viking daughters. They are Bonsma style and are very productive. They do not miss, and their sons are well-regarded in several seedstock herds. 844, seventeen years of age, hasn't missed a beat and produced one of our best bulls – Embody, named because he embodies function.

Blackbird of Volga 740 proves that mating Wye to Emulation produces cows with structural integrity, excellent teat and udder structure, good mothering ability and docility that will breed back with regularity and be long-lived.

These Foundation Females have contributed mightily to our functional herd. All of these Foundation Females are based upon decades of proven performance. History does not lie.

Our cows must maintain excellent fertility and be long-lived. They must be phenotypically correct, feminine, angular and Bonsma style, so they calve easily. They must feed their calves properly and cover large amounts of country during the summer. We cull females that have poor dispositions, poor legs and feet, inferior teat and udder structure and low-quality milk. We continue to strive for a mother cow that can wean a calf of at least 50% of her body weight. These are all characteristics of a profitable, functional herd.

In addition to EPDs provided by the Association, we have our own measures and scores.

We subscribe, in part, to the Bonsma-style of objective measurement. The mother cow must look like a Styrofoam coffee cup laid horizontally with the open end at the rear. In other words, the mother cow's hindquarters should, from a three-dimensional perspective, be larger than the front. You will notice that we give each of the Bull's mothers a Bonsma-style score from 1 to 10. (We think Jan Bonsma's book is a must read.)

Teat/Udder (T/U) Score. A score of 50 is perfect. We strive for a well-suspended udder with teats the size of a small or ring finger. We will not sell a Bull out of cow that scores below a teat size of 30, which is slightly larger than a thumb in width.

CE. Will not sell a Bull unless he calved unassisted.

Disposition/Docility. The lower the number, the better. 1 means that we picked up the calf, weighed and processed it, never had to bump the cow with a stick and were never bothered. 2 means that the cow was slightly more nervous, possible more vocal, but never a bother. 3 reflects a slight stick bump for getting within our space and the cow understood the gentle warning. We will not tolerate any cow that grades a 5.

Body Condition Score (BCS). We want cattle that maintain good flesh on grass and forage, are not overly fat, are smooth and have a good hair coat. The closer a cow scores to 1, the better.

We also are developing a data base of Cow Survival, Foot and Leg Score, Heifer Pregnancy, Cow Frame, Milk Quality and Cow Mature Weight. In addition, we are building a "Reference Pod" using today's modern's genetics. This Reference Pod will provide actual, real-world comparisons of our "old" Timeless Genetics to Modern Genetics in our range environment.

Selection Process.

The Calves. At birth, each calf is tagged, weighed and handled on foot. The calf must get up and quickly suck on its own. The cow needs to pair up and take her calf when pairing out. If the mother and calf do not meet these criteria, they are culled.

We also "sample" our calves. They consistently grade Choice or better – on grass and forage alone. We have increasing demand from "retail" customers who demand a constant supply of grass-finished cattle. If a particular type of mating can't meet the quality objective, we do not continue that breeding.

Final Selection of the Herd. There are two final steps in the selection process. All our animals must be easy to handle. We will not tolerate animals that are difficult to handle, regardless of any other characteristics. Mother Nature makes the final cut. If an animal can't make it on our native grass, supplemented with salt, mineral and apple cider vinegar, then Mother Nature culls the animal from our herd.

SVR Bulls. SVR Bulls were bred to thrive on the range and on forage. We developed them slowly and only on forage to promote proper skeletal, testicular and muscular development and assure quality. As the January 3, 2019 edition of *Progressive Cattle* points out:

[W]ith . . . high-energy growth diets comes the opportunity to become overconditioned. . . . [B]y the time a bull starts to develop pone and cod fat, he is likely fairly overconditioned. . . . Bulls that are overconditioned at a young age will have long-term impacts on their semen quality. . . .

[O]verconditioning of young bulls has been well-researched. . . . A bull's normal body temperature is 101.5* whereas his testicular temperature must be maintained between 94* and 98* for healthy spermatogenesis. . . . Overconditioned bulls have a layer of fat in their scrotum that acts as insulation for the testifies, increasing testicle temperature and decreasing sperm quality. [Insulated testicles had a "decrease in fertility for 23 to 36 days following insulation", such as that provided by fat.]

We want our Bulls to thrive during breeding season, and not "melt" as "finished" bulls so often do. Customers often tell us that SVR Bulls gain weight during breeding season on the range. They will last and will not require extra feed.

We also sell coming two-year-old bulls because, as *Progressive Cattle* notes, "purchasing an 'age advantaged bull' can pay off for the first breeding season, especially in a scenario when he will be the only sire with . . . a group of females."

SVR Bulls transmit structural soundness, fertility, superior teats and udders, functionally low birth weight, balanced growth and outstanding carcass quality. We have evaluated the Bulls for libido, fertility, good temperament, physical ability, soundness, athleticism and carcass quality. By taking time to develop them properly, we are confident in their ability to help create the optimum, low-input cow herd. They will transmit traditional Angus maternal goodness and functional traits and thrive in the low-input range environment.

You can see the Bulls at our Ranch (directions are provided at www.svr-angus.com), at the Burwell Livestock Market one day prior to Sale Day, or online at www.dvauction.com. You can view the Bulls on our website, www.svr-angus.com. Please visit the website to learn about our program and see our Herd Bulls, the AI sires and our Foundation Females. You can also watch The American Rancher program that featured our ranch, its history and the history of the Nebraska Sandhills.

These 90 Registered Black Angus two-year-old bulls embody Timeless Genetics for Today's Producer©, and will thrive for you. We challenge you to find any other set of bulls that combines the best genetic, functional traits of the Aberdeen Angus breed. Please come to the sale and see the difference!



**SVR GRASS-
FINISHED BEEF**



Have a great 2020!

SVR



Spring Valley Ranch & Cattle

Friday, February 7, 2020 • 1:00 p.m. (CST)

Burwell Livestock Market at Burwell, Nebraska

Location: Burwell Livestock Market, 401 S. 11th, Burwell, Nebraska. The Livestock Market is located in the southwest part of town, west of the water tower.

Sale Time: 1 p.m. CST. Free lunch to bidders, starting at 11:30 A.M.

Auctioneer: Kyle Schow: 308-289-3722

Consultant: Ken Brubaker: 540.908.5799

Viewing: You can see the Bulls on the Ranch (directions at www.svr-angus.com), or one day prior to Sale Day at the Burwell Livestock Market. You can also view videos online at www.svr-angus.com or www.DVAuction.com. Our log in page for viewing and bidding is <https://www.dvauction.com/events/100852>. We elected not to include photos of the Bulls in the Sale Book, because the Bulls are best viewed either in person or video.

Herd Health: All Bulls will have passed a breeding soundness examination and fertility test, administered by Marty Archibeque, DVM, Burwell Veterinary. All Bulls were vaccinated with Vira Shield™ 6, and Poured. All are virgin Bulls. Our entire cow herd is AM Free, NH Free, and CA Free. In 2017, we began testing our herd to assure it is John's free. Dr. Archibeque will be present to provide health certificates for same day shipment.

Sale Day Phones:

Sale Barn: 308.346.4257

Ben: 402.382.8181

Todd Eberle (Sale Barn Mgr.): 308.870.1783

Levi Landers (Angus Assn.): 308.730.1396

Kristian Rennert (Angus Assn.): 970.218.9208

Chris Beutler (Midwest Messenger): 402.380.8244

Black and Red: 785.564.1744

Online Bidding: As described on the next page, you may bid online through www.DVAuction.com. The specific link for <https://www.dvauction.com/events/100852>.

Absentee Bids: If you cannot be with us on Sale Day, and would like for us to place a bid, we will confidentially and honestly handle any bids for you. Please call any of us at the phone numbers listed above.

Volume Discount: SVR offers a \$100 discount on the third Bull purchased at this sale by the same buyer, and \$100 off each additional Bull purchased by the same buyer.

Lot Numbers: Sale Book numbers for the Bulls will correspond to right ear tags.

Delivery: Free Delivery within 250 miles of SVR. Over 250 miles, SVR will help coordinate delivery to the nearest convenient sale barn facility for the trucker and you. Sales totaling \$5000 or more will have a maximum delivery charge of \$300 per head anywhere in the lower 48 states. Sales totaling less than \$5000 will be delivered at cost. Bulls picked up sale day will receive a \$50 discount. Call Ben at (402) 684-3308 if any questions.

Guarantee: SVR will guarantee breeding soundness for the first 90 days, unless injury or death is caused by the buyer's negligence or an Act of God, such as lightning. SVR must be notified promptly of the Bull's breeding disability. SVR will work with the buyer and (i) replace the Bull with a comparable animal if SVR has such an animal; or (ii) credit the buyer with the purchase price, less salvage value, at SVR's next sale.

Retaining: SVR retains 1/3 Revenue Sharing and semen and certificate interest in all Bulls in the Sale Book, unless noted on sale day. Buyer has full possession and full salvage value. Should SVR want to collect a Bull at a later date, it will be at the buyer's convenience and at SVR's expense, without premium.

Storm Date: We will work with the Burwell Livestock Market to announce on the radio whether the Sale has been postponed because of a storm and a new sale date. We will also try to announce such event online and on www.DVAuction.com.

Terms and Conditions: Cattle will sell under the suggested Terms and Conditions of the American Angus Association (http://www.angus.org/Pub/suggested_sale_terms.pdf). All cattle are the buyer's property and the buyer's responsibility as soon as the gavel falls. All purchases must be paid in full prior to load. Health papers will be the buyer's responsibility if the buyer does not take possession within thirty days. Any changes made after printing of this Sale Book and disclosed on the website or noted on Sale Day shall control.

Liability: All persons attending the sale do so at their own risk. Neither SVR nor Burwell Livestock Market assume any liability, legal, at equity or otherwise, for any accident that may occur.

Insurance: Insurance will be available to buyers on sale day by James F. Bessler, Office: 630.945.3483, Cell: 816.762.2641, JamesFBessler.com.

Motels: Pump and Pantry Motel, Burwell • 308.346.4607
Rodeo Inn, Burwell • 308.346.4408

A "+" before the registration number indicates an ET calf.

Visit the Angus Journal® Web site, www.angus.org, and view this sale book online. References: American Angus Association®, AHIR®, AngusSource®, CAB®, Pathfinder®, EPDs current as of Dec. 19, 2019. Updated EPDs can be viewed online at www.angus.org. The American Angus Association does not generate nor endorse \$C numerical ranks (versus percentile rankings) until \$C numerical ranks are officially released.

PLEASE BRING YOUR SALE BOOK TO THE SALE!

COMMENTS FROM THE SALE MANAGER:

SPRING VALLEY RANCH & CATTLE

THE UNQUESTIONABLE HOME OF PROFITABLE, FUNCTIONAL, AND LOW INPUT ABERDEEN ANGUS CATTLE

What a unique program you will find at Spring Valley Ranch. Since day one the objective has been to produce low input, high return Aberdeen Angus cattle that embody the finest maternal and functional traits of the traditional Aberdeen Angus breed.

The 2020 offering is sensational, 90 two-year-old registered Aberdeen Angus bulls including seven sons of the immortal Prince of Malpas plus sons of RR Rito F0203; Emulous Pride 70 (CMS); Sinclair Bush Ranger; Sinclair Express 6V47 and the best of the Spring Valley breeding program.

The Spring Valley program is about utilizing grass and then producing an explosive product when their progeny are sent to feed lots across feed lot country and bring home those Choice graded and Prime carcasses with the Spring Valley program.

Frank Taylor, Ben and Sherry Andrews just don't talk about efficiency and low input, they practice and follow it through to the highest degree—there are no shortcuts.

Spring Valley has one of the most unique programs of its kind and you won't believe it until you observe it first-hand and put its time tested proven genetics to work in your program.

Spring Valley Angus has a lot to offer from the standpoint of money making seedstock that have proven that they can bring a great return on the rail. Every one of these two-year-old bulls were bred at Spring Valley and their dam is in residence backed with five to six generations of continuous grass-based genetics. Spring Valley Ranch is real world seedstock genetics in its finest hour. Plan to attend and see for yourself!

I look forward to seeing you at this important Angus sale.

Sincerely,
Tom Burke,
Sales Manager




Tom Burke
(816) 853-2697




Kurt Schaff
(816) 520-6447




Jeremy Haag
(816) 516-1309

DVAuction

www.dvauction.com

Watch & Bid online for FREE!

Can't make the sale?

Let DVAuction bring the sale to you!

Busy during the sale?

Let DVAuction represent your bid!

Visit www.dvauction.com and Register!

It's as easy as 1, 2, 3...

1. Create an account at www.dvauction.com under the "create new account" tab
2. Apply for bidding by clicking "apply for bidding" in the upper left corner of your screen, at least 24 hours prior to the auction
3. Tune into the sale and make your purchases!

For General Questions Please Contact Our Office:

(402) 316-5460 or support@dvauction.com

*High Speed Internet Access Required

SVR CONTINUED COPELAND8105F

1 Birth Date: 3-8-2018 Bull *19563308 Tattoo: 8105F

SVR Continued of Rose 1158 +17401331	Federal of Wye Clova of Wye Umf 8044	BW 78 ADJ. 205 570 ADJ. SC 37.20
SVR Copeland of Rose 0573-5556 *18946782	*SVR Range Master 1201 +SVR Copeland of Rose 7546-0573	

CE	BW EPD	WW EPD	YW EPD	MILK	SEN	REA/CWT	ACT. IMF
+5	+2	+19	+28	+14	+20	1.09	2.13
Dam's Information	TEAT/UDDER	CE	DIS	BONSMMA	FLESH		
Provided by SVR	45/45	1	1	3	3		

Heifer Bull prospect sired by SVR Continued of Rose 1158 who has 58 daughters working in our herd. His pedigree stacks four proven donor cows that combine Wye, Rito, and Traveler. His grand dam is a flush sister to both SVR Range Master 0134 used in our herd and SVR Range Master 0127 purchased by Jeremy Woeppel of Chambers, NE. Lot 1 will produce long-lived daughters and will add carcass quality to his sons. 8105F would do well on a Rito influenced cowherd!

SVR CONTINUED BLACK 8109F

2 Birth Date: 3-9-2018 Bull *19563180 Tattoo: 8109F

SVR Continued of Rose 1158 +17401331	Federal of Wye Clova of Wye Umf 8044	BW 71 ADJ. 205 476 ADJ. SC 33.73
SVR Blackbird of Rose 2542-5515 18946780	Sinclair Express 6V47 +SVR Blackbird of Rose 712-2542	

CE	BW EPD	WW EPD	YW EPD	MILK	SEN	REA/CWT	ACT. IMF
+7	-6	+12	+17	+7	+27	1.07	1.49
Dam's Information	TEAT/UDDER	CE	DIS	BONSMMA	FLESH		
Provided by SVR	45/45	1	1	3	3		

Heifer Bull that combines Federal and Lodge that were 3/4 brothers and main stays of the Wye program. Federal is a notable meat sire and Lodge sold for a record \$250,000 in 1968 to Black Watch Farms. Lodge produced over 250,000 units of semen in one year and was used on 18,000 cows in Black Watch's herd in one year. With the addition of our carcass sire Sinclair Express 6V47, Lot 2 should sire long lived progeny with excellent functional Angus traits with excellent carcass quality.

SVR RITO BLACK ERIC 8111F

3 Birth Date: 3-13-2018 Bull 19563223 Tattoo: 8111F

SVR Hundred Rito Black 3158 +17973298	Hundred Oaks Rito Blackbird of Volga 0740	BW 77 ADJ. 205 501 ADJ. SC 33.86
SVR D Erica of Rose 143-5558 +18887836	Sinclair Express 6V47 +Coleman Dixie Erica 143	

CE	BW EPD	WW EPD	YW EPD	MILK	SEN	REA/CWT	ACT. IMF
+6	+7	+24	+37	+7	+23	1.00	1.10
Dam's Information	TEAT/UDDER	CE	DIS	BONSMMA	FLESH		
Provided by SVR	45/45	1	1	3	2		

Prospect for well-developed heifers or cows. Lot 3 pedigree blends two of our more powerful and highly proven donors in 740 and 143 along with the performance EXT son A1747. 740 is still producing at age 13, and 143 produced into her mid-teens. Lot 3 should sire calves with plenty of growth and performance. He'll produce refined, angular, long-lived productive daughters with strong maternal instincts!

SVR CONTINUED BLACK 8115F

4 Birth Date: 3-14-2018 Bull *19563181 Tattoo: 8115F

SVR Continued of Rose 1158 +17401331	Federal of Wye Clova of Wye Umf 8044	BW 90 ADJ. 205 560 ADJ. SC 34.39
SVR Blackbird of Rose 9XB5-5621 18946731	*SVR Range Master 1201 Sinclair Blackbird 9XB5 103K	

CE	BW EPD	WW EPD	YW EPD	MILK	SEN	REA/CWT	ACT. IMF
-3	+3.5	+25	+41	+15	+19	1.06	1.96
Dam's Information	TEAT/UDDER	CE	DIS	BONSMMA	FLESH		
Provided by SVR	45/45	1	1	3	3		

A strong made Cow Bull produced from our Foundation Herd Sire 1158, Rito 149 and Emulation bloodlines! This is a great bull to sire strong sons and productive, long-lived, efficient, maternal females. His dam has an excellent udder, is easy to handle at calving and has just weaned a heifer calf headed to the replacement pen.

SVR CONTINUED ERIC 8116F

5 Birth Date: 3-15-2018 Bull 19563288 Tattoo: 8116F

SVR Continued of Rose 1158 +17401331	Federal of Wye Clova of Wye Umf 8044	BW 84 ADJ. 205 537 ADJ. SC 37.42
SVR Erica of Rose 656-5574 +19116702	#Paramont Ambush 2172 FWR 975 Lady Viking 656	

CE	BW EPD	WW EPD	YW EPD	MILK	SEN	REA/CWT	ACT. IMF
+0	+1.9	+15	+24	+15	+19	1.13	1.93
Dam's Information	TEAT/UDDER	CE	DIS	BONSMMA	FLESH		
Provided by SVR	45/40	1	1	2	3		

This unique Cow Bull will build strong maternal Bonsma-style females while producing superb carcass quality. His dam is an own daughter of Paramont Ambush 2172, which is the all-time top semen selling Select Sires bull. 2172 had more than 4700 daughters with a collective WW ratio of 100 and had more than 900 head go through the Structured Sire Evaluation. To strengthen Lots 5's maternal side, Viking GD60, Candolier Forever 376 and Rito 149 are all in the pedigree of his dam. His sire blends two foundation and well-proven Wye sires in Federal of Wye and Churchill, which concentrates the maternal strength of Fabron, Prince of Malpas, Matilda G and Colleen. Lot 5 is a full brother in blood to Lot 6. They would be a great pair of bulls to use together to concentrate maternal strength and carcass quality.

SVR CONTINUED ERIC 8117F

6 Birth Date: 3-17-2018 Bull 19563287 Tattoo: 8117F

SVR Continued of Rose 1158 +17401331	Federal of Wye Clova of Wye Umf 8044	BW 85 ADJ. 205 585 ADJ. SC 34.98
SVR Erica of Rose 656-5543 +19116701	#Paramont Ambush 2172 FWR 975 Lady Viking 656	

CE	BW EPD	WW EPD	YW EPD	MILK	SEN	REA/CWT	ACT. IMF
-1	+2.0	+20	+31	+16	+18	1.04	2.15
Dam's Information	TEAT/UDDER	CE	DIS	BONSMMA	FLESH		
Provided by SVR	40/40	1	1	2	3		

This unique Cow Bull will build strong maternal Bonsma-style females while producing superb carcass quality. His dam is an own daughter of Paramont Ambush 2172, which is the all-time top semen selling Select Sires bull. 2172 had more than 4700 daughters with a collective WW ratio of 100 and more than 900 head go through the Structured Sire Evaluation. To strengthen Lot 6's maternal side, Viking GD60, Candolier Forever 376 and Rito 149 are all in the pedigree of his dam. His sire blends two foundation and well-proven Wye sires in Federal and Churchill concentrating the maternal strength of Fabron, Prince of Malpas, Matilda G and Colleen. Lot 6 is a full brother in blood to Lot 5. They would be a great pair of bulls to use together to concentrate maternal strength and carcass quality.



EMULOUS PRIDE 70

Emulous Pride 70, known as Big 70, was a 100% Certified Meat Sire ("CMS"). He was the only 100% CMS bull to be sired by a 100% CMS and to have sired a 100% CMS sire. Bred by Murray Corbin, Big 70 and his brother Emulous TN 70 were out of Gaines Lady, who was one of the only females in the world to be the dam of two Certified Meat Sires. She produced 21 natural calves and remained sound and in production until 24. Big 70 gained 4.29 pounds per day on official test and had an actual weight of more than 1,200 pounds. He was officially tested free of multiple genetic defects. Big 70 earned lifetime progeny weaning and yearling ratios of 101 and 102 and had more than 500 daughters recorded in the AHIR program. Burke, *Angus Legends*, p. 230.

SVR 7 SVR EMUL P 70 ENCHANT 8123F

Birth Date: 3-23-2018

Bull +*19607774

Tattoo: 8123F

Emulous Pride 70 (INF-ROF)
4285114

Emulous Bob of K Pride
Gaines Lady

BW
46
ADJ. 205
364
ADJ. SC
29.68

SCC Enchantress 3F1 X412
+14388183

#Emulation N Bar 5522
#N Bar Enchantress 4908

CE	BW EPD	WW EPD	YW EPD	MILK	\$EN	REA/CWT	ACT. IMF
I+2	I-1.3	I+9	I+20	I+10	+21	1.26	2.54

Dam's Information	TEAT/UDDER	CE	DIS	BONSMA	FLESH
Provided by SVR	45/40	1	1	3	4

This Heifer Bull was sired by Emulous Pride 70 who is the ONLY Bull of any breed in the WORLD to be sired by a 100% Certified Meat Sire as well as to sire a 100% Certified Meat Sire himself. Lot 7 is a paternal sibling to Ankonian Dynamo. His dam SCC Enchantress 3F1 is the mother of many bulls in seedstock herds across the country, such as SVR Revolution 3173 at Hyline Angus and SVR XXP Enchanted 5135 at Fink Beef Genetics. She also has four sons and over twenty daughters in our herd! Lot 7 will sire calves with a great combination of carcass quality and maternal traits.

SVR 9 SVR RANGER KING 8126F

Birth Date: 3-30-2018

Bull 19597381

Tattoo: 8126F

Sinclair Bush Ranger 9X16
+16361050

#N Bar Emulation EXT
#N Bar Enchantress 4908

BW
81
ADJ. 205
502
ADJ. SC
34.02

SVR Queen of Rose 4049-3583
19583242

+*Coleman Rito 149-8253
JC Traveler Queen 4049

CE	BW EPD	WW EPD	YW EPD	MILK	\$EN	REA/CWT	ACT. IMF
+5	+0	+24	+39	+25	+11	0.94	1.94

Dam's Information	TEAT/UDDER	CE	DIS	BONSMA	FLESH
Provided by SVR	40/40	1	1	4	1

Great Heifer Bull for well-developed heifers. Bush Ranger is a full brother to NBar Shadow. His dam is a stout broody, productive female offering the best in Rito and Traveler bloodlines! The cross of Bush Ranger (EXT) on Traveler does not miss. Lot 9 combines the added length and extra rib and the maternal goodness and range adaptability of Bush Ranger with the bone, rib, flesh, and added muscle offered by Rito and Traveler. Lot 9 should sire sons with muscle and length and daughters with functionality and strong maternal goodness.

SVR 8 SVR CC 782 ERIC 8124F

Birth Date: 3-24-2018

Bull 19563271

Tattoo: 8124F

Cole Creek 1100 Black 782
17329089

Cole Creek Black Cedar 1100
#Cole Creek Junadacap 32S

BW
77
ADJ. 205
532
ADJ. SC
37.71

SVR Erica of Rose 656-5577
+19116703

#Paramont Ambush 2172
FWR 975 Lady Viking 656

CE	BW EPD	WW EPD	YW EPD	MILK	\$EN	REA/CWT	ACT. IMF
+4	-2	+20	+32	+26	+13	1.17	1.62

Dam's Information	TEAT/UDDER	CE	DIS	BONSMA	FLESH
Provided by SVR	45/45	1	1	2	3

This tremendous Heifer Bull will sire top end replacements. His dam is an own daughter of Paramont Ambush 2172, which is the all-time top semen selling Select Sires bull. 2172 had more than 4700 daughters with a collective WW ratio of 100 and more than 900 head go through the Structured Sire Evaluation. To strengthen Lot 8's maternal side, Viking GD60, Candolier Forever 376 and Rito 149 are all in the pedigree of his dam. His sire has been one of our best female makers, with over 20 daughters in production in our herd! This is a pedigree that assures predictability, uniformity and function.

SVR 10 SVR RANGER ENCHANTED 8127F

Birth Date: 3-30-2018

Bull 19563192

Tattoo: 8127F

Sinclair Bush Ranger 9X16
+16361050

#N Bar Emulation EXT
#N Bar Enchantress 4908

BW
75
ADJ. 205
440
ADJ. SC
33.52

SVR Enchantress 3F1-3562
+18885226

#Candolier Forever 376
+SCC Enchantress 3F1 X412

CE	BW EPD	WW EPD	YW EPD	MILK	\$EN	REA/CWT	ACT. IMF
+11	-2.6	+10	+21	+24	+15	1.21	1.23

Dam's Information	TEAT/UDDER	CE	DIS	BONSMA	FLESH
Provided by SVR	45/40	1	1	3	4

Heifer Bull Prospect. Lot 10 is sired by our Foundation Herd Bull Bush Ranger, a full brother to NBar Shadow. Bush Ranger sires females similar to Shadow, but more moderate of frame and bettered uddered. We strongly believe that Bush Ranger sires excellent bulls. His dam is an own daughter of Candolier Forever 376 out of 3F1 making this an uncle/niece mating to add prepotency to this bull. We don't think there is a better bull in the country to sire exceptional females, because of his maternal pedigree! He's a full brother in blood to Lots 13 and 37. If you want to improve your herd quickly, buy all three and put them to work.

SVR EUREKA Z284 ERIC 8128F

11

Birth Date: 3-30-2018

Bull *19563197

Tattoo: 8128F

Limestone Eureka Z284
17229474

#*OCC Eureka 865E
+OCC Pollyanna 669U

SVR Erica of Rose 346-5632
18946723

+Sinclair Bush Ranger 9X16
BAX Miranda Aspen 346-644

CE	BW EPD	WW EPD	YW EPD	MILK	SEN	REA/CWT	ACT. IMF
+8	-9	+22	+34	+19	+17	1.20	.65
Dam's Information		TEAT/UDDER	CE	DIS	BONSMA	FLESH	
Provided by SVR		45/45	1	2	3	3	

Heifer Bull with built in longevity! His mother's side represents nearly all of our foundation cows. 346 and 644 are still in production at 14 and 16 years of age and the 72 cow produced into her 20's. They have withstood the tough environmental selection of the Sandhills and left us with many daughters in our herd. Lot 11 is great combination of time tested and proven genetics through the blending of EXT and Traveler. He will sire long-lived, broody, angular and productive females, and stout sons.

SVR FOREVER 4170 KING 8131F

14

Birth Date: 4-1-2018

Bull 19563238

Tattoo: 8131F

SVR 844 Forever 4170
+*18317659

#Candolier Forever 376
#*BAX Aspen Lady 844-72

SVR Queen M of Rose9141-3558
+18917583

Manning of Wye
Queen Mother of Wye UMF 9141

CE	BW EPD	WW EPD	YW EPD	MILK	SEN	REA/CWT	ACT. IMF
+3	-1.1	-1	-5	+21	+21	1.13	1.08
Dam's Information		TEAT/UDDER	CE	DIS	BONSMA	FLESH	
Provided by SVR		45/45	1	1	4	4	

This is a great bull to freshen heifers and leave you with long-lived productive females. His dam is an own daughter of Manning of Wye, known for maternal goodness. Nowhere else will you find a pedigree combining two of the top foundation producing cows ever at Wye up-close in a pedigree. Colleen of Wye had a WW Ratio of 110 on fourteen calves and was in production until sixteen. Blythe of Wye was the highest production cow at Wye with a combined 11,020 pounds on eighteen calves and produced until she was twenty. Lot 14's sire is by Candolier Forever 376 who is in the top 10 animals in the Angus breed for contribution to the Angus gene pool. Lot 14's dam 844 produced until fourteen! This bull will breed longevity and function into a cow herd.

SVR EUREKA Z284 PRIDE 8129F

12

Birth Date: 3-30-2018

Bull *19563198

Tattoo: 8129F

Limestone Eureka Z284
17229474

#*OCC Eureka 865E
+OCC Pollyanna 669U

SVR C Pride 8XE49-5630
18946725

*SVR Range Master 1201
Sinclair C Pride 8XE49 3G32

CE	BW EPD	WW EPD	YW EPD	MILK	SEN	REA/CWT	ACT. IMF
+5	+4	+32	+55	+22	+13	1.01	1.44
Dam's Information		TEAT/UDDER	CE	DIS	BONSMA	FLESH	
Provided by SVR		45/45	1	1	3	3	

This Cow Bull is a meat wagon and will produce meat wagons. He's a grand combination of Traveler and Emulation, should add fleshing ability and muscle, without sacrificing femininity and maternal traits. His daughters should be slightly heavier boned with more body, while retaining angularity and refinement through their front ends. His sons should be thick and deep.

SVR EUREKA Z284 ERIC 8132F

15

Birth Date: 4-2-2018

Bull 19563196

Tattoo: 8132F

Limestone Eureka Z284
17229474

#*OCC Eureka 865E
+OCC Pollyanna 669U

SVR Erica of Rose 844-3554
+18913608

#*OCC Homer 650H
#*BAX Aspen Lady 844-72

CE	BW EPD	WW EPD	YW EPD	MILK	SEN	REA/CWT	ACT. IMF
+13	-2.7	+32	+47	+23	+13	1.08	2.15
Dam's Information		TEAT/UDDER	CE	DIS	BONSMA	FLESH	
Provided by SVR		45/40	1	1	2	3	

Lot 15 is a Cow Bull that is heavy with OCC Focus and 654X influence and backed by our Foundation Female 844 that produced until 14. His dam is a nice, moderate and efficient Homer daughter with a short gestation period. His sire was a powerhouse son of Eureka. He's a great bull to add fleshing ability and muscle while maintaining efficiency and calving ease for the range. His females should be broody yet soft, extended, and angular.

SVR RANGER ENCHANTED 8130F

13

Birth Date: 4-1-2018

Bull 19563191

Tattoo: 8130F

Sinclair Bush Ranger 9X16
+16361050

#*N Bar Emulation EXT
#N Bar Enchantress 4908

SVR Enchantress 3F1-4530
+18910683

#Candolier Forever 376
+SCC Enchantress 3F1 X412

CE	BW EPD	WW EPD	YW EPD	MILK	SEN	REA/CWT	ACT. IMF
+12	-2.9	+18	+31	+25	+13	1.05	1.17
Dam's Information		TEAT/UDDER	CE	DIS	BONSMA	FLESH	
Provided by SVR		45/40	1	1	3	4	

This Heifer Bull prospect is sired by our Foundation Herd Bull Bush Ranger, a full brother to NBar Shadow. Bush Ranger sires females similar to Shadow, but more moderate of frame and bettered uddered. We strongly believe that Bush Ranger sires excellent bulls. Lot 13's dam is an own daughter of Candolier Forever 376 out of 3F1 making this an uncle/niece mating to add prepotency to this bull. We don't think there is a better bull in the country to sire exceptional females, because of his maternal pedigree! He's a full brother in blood to Lots 10 and 37. If you want to improve your herd quickly, buy all three and put them to work.

SVR RANGER ENCHANTED 8136F

16

Birth Date: 4-3-2018

Bull 19563194

Tattoo: 8136F

Sinclair Bush Ranger 9X16
+16361050

#*N Bar Emulation EXT
#N Bar Enchantress 4908

SVR Enchantress 3F1-5519
+18918504

+*Sinclair Emulation XXP
+SCC Enchantress 3F1 X412

CE	BW EPD	WW EPD	YW EPD	MILK	SEN	REA/CWT	ACT. IMF
+11	-2.9	+24	+43	+20	+13	1.18	1.56
Dam's Information		TEAT/UDDER	CE	DIS	BONSMA	FLESH	
Provided by SVR		45/45	1	1	4	5	

We considered adding this Heifer Bull to our herd. This herd sire prospect is heavily linebred to EXT and Enchantress to concentrate their maternal goodness and strength. He is a great candidate for someone needing a bull to be a complete outcross to modern genetics and terminal cattle. He will produce increased fertility, longevity and range adaptability without sacrificing performance.

SVR LODGE 2043 EDEL 8137F

17

Birth Date: 4-4-2018

Bull 19563212

Tattoo: 8137F

SVR Range Master 2043
+*17685366

Lodge of Wye [RF]
+Sinclair Lady Ida 04F3 B154

SVR Edella of ROSE8MB36-1509
18885220

*BAX Embody 97-844
Sinclair Edella 8MB36 4V9

CE	BW EPD	WW EPD	YW EPD	MILK	SEN	REA/CWT	ACT. IMF
+3	-1.3	+25	+39	+22	+14	0.92	1.58
Dam's Information	TEAT/UDDER	CE	DIS	BONSMA	FLESH		
Provided by SVR	45/40	1	1	3	2		

This Heifer Bull prospect is a great blend of Lodge of Wye, Traveler and Emulation NBar 5522. His dam, 1509, is becoming one of our best Embody 97 daughters. Embody's dam, 844, was a grand Bonsma-style cow who produced until she was fourteen. Lot 17 sire will be 8 this spring and will still breed cows in large Sandhills pastures.

SVR CONTINUED LOU 8140F

20

Birth Date: 4-5-2018

Bull 19563206

Tattoo: 8140F

SVR Continued of Rose 1158
+17401331

Federal of Wye
Clova of Wye Umf 8044

SVR Lucy of Rose 420-4592
18902984

*SVR Cornerstone of Rose 1112
Lucy of Volga 0420

CE	BW EPD	WW EPD	YW EPD	MILK	SEN	REA/CWT	ACT. IMF
+3	+9	+23	+38	+12	+20	1.12	1.78
Dam's Information	TEAT/UDDER	CE	DIS	BONSMA	FLESH		
Provided by SVR	45/45	1	1	2	3		

This Cow Bull's sire has almost 60 daughters in our herd and has dominated breeding in multisire pastures even now at 8 years of age. Colleen of Wye in his pedigree lived until she was 14. The sire of Lot 20 dam is 9 and still producing. His dam is still working at 9, his mother is 17 and still going and 420 was in production until 15. We don't think you can find a bull anywhere else with that much proven production and longevity under strict grass and range environmental selection. This bull will build a herd.

SVR FOREVER 4134 LARS 8138F

18

Birth Date: 4-4-2018

Bull 19563240

Tattoo: 8138F

SVR Revolution 4134
+*18317662

#Candolier Forever 376
+SCC Enchantress 3F1 X412

SVR Lara of Rose 510-2537
+18920032

#Emulation 31 [DWF-RDF]
Lara of Volga 0510

CE	BW EPD	WW EPD	YW EPD	MILK	SEN	REA/CWT	ACT. IMF
+12	-2.8	+14	+21	+21	+19	1.19	3.00
Dam's Information	TEAT/UDDER	CE	DIS	BONSMA	FLESH		
Provided by SVR	45/45	1	2	3	4		

A great, smooth-shouldered, sharp-fronted, Heifer Bull with a keen head. Lot 18 is sired by 4134 who is a full brother to SVR Revolution 3173 seeing heavy use at Hyline Angus. His paternal granddam is 17 and still in production. Combining those cattle with an own daughter of E31 out of an Alap cow should mean that all his progeny will be long-lived and fertile. Females by Lot 18 should be good-uddered, sound and productive.

SVR RITO DOUBLE BLACK 8142F

21

Birth Date: 4-5-2018

Bull *19563313

Tattoo: 8142F

SVR Hundred Rito Black 3158
+17973298

Hundred Oaks Rito
Blackbird of Volga 0740

SVR Blkbd of Rose 5P101-4606
18946803

+*Jad Peter X414-6157
Sinclair Blkbd 5P101 3S25

CE	BW EPD	WW EPD	YW EPD	MILK	SEN	REA/CWT	ACT. IMF
+6	+9	+18	+30	+10	+23	1.08	1.99
Dam's Information	TEAT/UDDER	CE	DIS	BONSMA	FLESH		
Provided by SVR	45/45	1	1	3	4		

This is a great Cow Bull. 740 is still in production at 13, 6157 worked until 21, and 5P101 produced until she was 10. 5P101 put several bulls through our bull sale and left us with several daughters in our herd. As you can see, instead of stacking numbers, we stack old, highly maternal, functional, properly structured cows to increase fertility, longevity and production.

SVR LODGE 2043 NAL 8139F

19

Birth Date: 4-4-2018

Bull 19563210

Tattoo: 8139F

SVR Range Master 2043
+*17685366

Lodge of Wye [RF]
+Sinclair Lady Ida 04F3 B154

Sinclair Nalie 9BT6 3P34
16330701

#+BT Right Time 24J
Sinclair Nalie 3P34 B348

CE	BW EPD	WW EPD	YW EPD	MILK	SEN	REA/CWT	ACT. IMF
+3	+8	+27	+45	+22	+14	1.01	.82
Dam's Information	TEAT/UDDER	CE	DIS	BONSMA	FLESH		
Provided by SVR	45/45	1	1	3	3		

Cow Bull who will sire productive mother cows. Lot 19 dam is 11 years old and still in production. She is good-uddered and easy to handle at calving. His paternal granddam produced till 14 and his sire is still competing for the right to breed cows in multi-sire pastures at 8 years of age. He is a great option to add longevity, soundness, production, and breeding vigor to your herd.

SVR EUREKA Z284 ERIC 8145F

22

Birth Date: 4-6-2018

Bull 19563262

Tattoo: 8145F

Limestone Eureka Z284
17229474

#*OCC Eureka 865E
+OCC Pollyanna 669U

SVR Dixie Erica 143-4533
+18910688

#Candolier Forever 376
+Coleman Dixie Erica 143

CE	BW EPD	WW EPD	YW EPD	MILK	SEN	REA/CWT	ACT. IMF
+6	+4	+21	+36	+24	+15	1.01	1.34
Dam's Information	TEAT/UDDER	CE	DIS	BONSMA	FLESH		
Provided by SVR	45/40	1	1	3	4		

A great Cow Bull out of an own daughter of Candolier Forever 376 whose dam is our Foundation Donor, Coleman Rito 143. 376 appears several times in Lot 22's pedigree through 654X and Homer. Lot 22 is a balanced blend of 376 with Traveler. His breeding is very similar to both Traveler 1148 and Traveler 3173.

SVR FOREVER 4134 EDDA 8147F

23	Birth Date: 4-7-2018	Bull 19563331	Tattoo: 8147F
SVR Eric Forever 4148 +*18317668	#Candolier Forever 376 +Coleman Dixie Erica 143	BW 81 ADJ. 205 410 ADJ. SC 32.77	
SVRLady Ida of Rose04F3-3521 +18925222	+*Sinclair Shadow Rider 9S34 +Sinclair Lady Ida 04F3 B154		

CE	BW EPD	WW EPD	YW EPD	MILK	SEN	REA/CWT	ACT. IMF
+6	-5	+18	+31	+24	+16	1.18	1.34
Dam's Information	TEAT/UDDER	CE	DIS	BONSMA	FLESH		
Provided by SVR	45/45	1	2	2	3		

An excellent Cow Bull. Lot 23's dam is an intensely linebred Emulation cow stemming from our Foundation Female 04F3. His dam is one of twenty-six Foundation Female 04F3 daughters in production at SVR. His sire is very similar in blood and should breed in type and kind to both Traveler 1148 and Traveler 3173. He is a great blend of Wye, Traveler, and backed by a sound, productive, early calving Emulation cow.

SVR FOREVER 4148 ERIC 8151F

26	Birth Date: 4-7-2018	Bull 19563248	Tattoo: 8151F
SVR Eric Forever 4148 +*18317668	#Candolier Forever 376 +Coleman Dixie Erica 143	BW 72 ADJ. 205 466 ADJ. SC 31.74	
SVR Erica of Rose 113-2643 18902979	Beeler of Volga 1052 BAX Miranda Aspen 113-447		

CE	BW EPD	WW EPD	YW EPD	MILK	SEN	REA/CWT	ACT. IMF
+7	-9	+21	+31	+21	+17	1.08	1.17
Dam's Information	TEAT/UDDER	CE	DIS	BONSMA	FLESH		
Provided by SVR	45/45	1	2	3	2		

Suitable for use on well-developed heifers. His dam is a moderate, deep, easy-keeping cow who just weaned a tremendous bull calf slated for sale in 2021. Lot 26's sire is bred in similar fashion to both Traveler 1148 and Traveler 3173.

SVR CONTINUED PRIDE 8152F

27	Birth Date: 4-8-2018	Bull *19563207	Tattoo: 8152F
SVR Continued of Rose 1158 +17401331	Federal of Wye Clova of Wye Umf 8044	BW 82 ADJ. 205 450 ADJ. SC 32.78	
SVR Range Ebonyangelica 0553 +17685341	#+OCC Emblazon 854E BAX Ebony Angelica 189-115		

CE	BW EPD	WW EPD	YW EPD	MILK	SEN	REA/CWT	ACT. IMF
+6	+1.0	+20	+33	+13	+20	1.08	2.09
Dam's Information	TEAT/UDDER	CE	DIS	BONSMA	FLESH		
Provided by SVR	45/45	1	1	4	2		

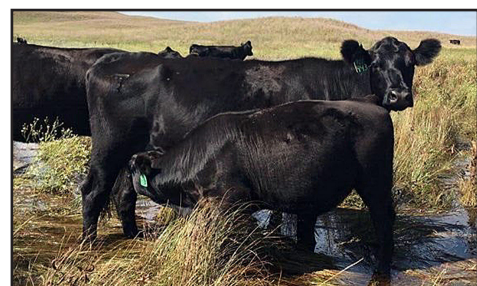
This Cow Bull is out of a productive 9-year-old Emblazon daughter. This will be her third son to be offered at our sale. Her calf 7237 was selected last year by the Warren Ranch of Seneca. Lot 27's sire is foundation Wye at its finest and has left us with almost 60 daughters in our herd. Here is a great Herd Sire to build a group of good cows around, without sacrificing quality feeders. We suggest pairing Lots 27 and 29 for a set of three-quarter siblings to improve any herd.

SVR CORNERSTONE BLACK 8154F

28	Birth Date: 4-9-2018	Bull 19563173	Tattoo: 8154F
SVR Cornerstone of Rose 1112 *17381466	+*Sinclair Emulation 5522 XP +SCC Enchantress 3F1 X412	BW 86 ADJ. 205 523 ADJ. SC 35.00	
Blackbird of Volga 1443 18007925	Lodge of Volga 0816 #Blackbird of Volga 0727		

CE	BW EPD	WW EPD	YW EPD	MILK	SEN	REA/CWT	ACT. IMF
+1	+1.3	+27	+40	+18	+16	0.89	1.86
Dam's Information	TEAT/UDDER	CE	DIS	BONSMA	FLESH		
Provided by SVR	45/45	1	1	3	3		

A tremendous Herd Sire Cow Bull. His sire 1112 has made a significant impact upon our herd, siring cattle very similar to NBar 5522 in type and kind with excellent libido, fertility and longevity. 1112 is 9 and his dam is 17 and still producing for us. We have retained almost 20 of 1112's daughters and have sold over a dozen sons of 1112. One of 1112's best sons is 4240 who we're using in our herd and who has sons in this sale. We think combining 1112 and 4240 sons would make a great multi-sire group for use in large pastures. Lot 28 and his dam are pictured below before weaning. She is a splendid young cow with a great udder who is just hitting her stride and just weaned another sale bull.



SVR RANGER BURGESS 8149F

24	Birth Date: 4-7-2018	Bull 19563236	Tattoo: 8149F
Sinclair Bush Ranger 9X16 +16361050	#N Bar Emulation EXT #N Bar Enchantress 4908	BW 87 ADJ. 205 418 ADJ. SC 32.77	
SVR Burgess of Rose 604-3551 +18885225	N Bar Shadow X4124 +BAX Aberdeen Bonnie 604-5104		

CE	BW EPD	WW EPD	YW EPD	MILK	SEN	REA/CWT	ACT. IMF
+2	+4	+15	+25	+21	+16	1.12	1.70
Dam's Information	TEAT/UDDER	CE	DIS	BONSMA	FLESH		
Provided by SVR	45/40	1	1	3	3		

This great Cow Bull prospect is the combination of two full brothers to concentrate the Shadow and Bush Ranger breeding while capitalizing on our 604 cow. 604 is still in production at 16 and has many sons seeing work throughout the Sandhills. To draw a comparison between Bush Ranger and Shadow, we flushed her to both Shadow and Bush Ranger. It is from these flushes and others that we concluded that Bush Ranger was ever so slightly better than Shadow. Nonetheless, all of the offspring were very consistent and were well received by our customers wanting to build Bonsma style females. This is a proven and predictable mating.

SVR FOREVER 4134 KING 8150F

25	Birth Date: 4-7-2018	Bull 19563330	Tattoo: 8150F
SVR Revolution 4134 +*18317662	#Candolier Forever 376 +SCC Enchantress 3F1 X412	BW 81 ADJ. 205 425 ADJ. SC 33.27	
SVR Queen M of Rose9141-3545 +18917582	Manning of Wye Queen Mother of Wye UMF 9141		

CE	BW EPD	WW EPD	YW EPD	MILK	SEN	REA/CWT	ACT. IMF
+4	-6	+9	+14	+19	+19	1.10	.68
Dam's Information	TEAT/UDDER	CE	DIS	BONSMA	FLESH		
Provided by SVR	45/45	1	1	3	5		

Great Heifer Bull to freshen heifers and leave you with long-lived, productive females. His dam is an own daughter of Manning of Wye, one of the best bulls produced by the Wye Plantation. Nowhere else will you find a pedigree combining two of the top Wye foundation cows so close in a pedigree. Colleen of Wye had a WW Ratio of 110 on 14 calves and was in production till 16. Blythe of Wye was the highest production cow at Wye with a combined 11,020 pounds on 18 calves. She produced until she was 20. Lot 25's sire is Candolier Forever 376 who is in the Top 10 animals in the Angus breed for contribution to the Angus gene pool.

SVR CONTINUED PRIDE 8155F

29 Birth Date: 4-10-2018 Bull *19563291 Tattoo: 8155F
 SVR Continued of Rose 1158 Federal of Wye
 +17401331 Clova of Wye Umf 8044
 SVR Pride of Rose 189-0546 #OCC Magnitude 805M
 +18913619 BAX Ebony Angelica 189-115

CE	BW EPD	WW EPD	YW EPD	MILK	\$EN	REA/CWT	ACT. IMF
-1	+2.6	+27	+45	+13	+18	1.19	1.72
Dam's Information	TEAT/UDDER	CE	DIS	BONSMA	FLESH		
Provided by SVR	45/45	1	1	4	2		

Cow Bull, out of a productive 10-year-old Magnitude daughter. After seeing the quality of his full sister, we repeated this mating and we're not disappointed. Lot 29's sire is foundation Wye at its finest and has left us with almost 60 daughters in our herd. Here is a great Herd Sire to build a group of good cows around, without sacrificing the quality feeders. Great bull to pair with Lot 27 for a set of three-quarter siblings to run together in a large pasture for consistency and uniformity.



PBC 707 1M F0203

PBC 707 1M F0203 was the most noteworthy achievement of the Pioneer Beef Cattle program. **F0203's** fame developed years after his death, and many herdsmen wished they had used him more. He is known for siring great females such as Bemindful Maid DHD 0807, the mother of DHD Traveler 6807; Dixie Erica of CH 1019, the mother of several grand Ohlde bulls, including OCC Emblazon 854E; Blackbird of RR 1204, the mother of RR Hero 6267 and several top flight Ohlde bulls; and several other excellent females. He didn't disappoint with his sons, either, siring RR Rito Highroller 8025, RR Rito Highroller 9354 and Schearbrook Classic. **F0203** earned a progeny weaning ratio of 102 on nearly 1,100 head and a progeny yearling ratio of 103 on more than 600 head with nearly 400 daughters in the AHIR program who posted a collective progeny weaning ratio of 101.

SVR F0203 RITO BLACK 8156F

30 Birth Date: 4-10-2018 Bull +19588386 Tattoo: 8156F
 PBC 707 1M F0203 #RR Rito 707
 #8252710 Evocate Princess T
 Blackbird of Volga 0740 Churchill of Wye
 16195934 Blackbird of Volga 9511

CE	BW EPD	WW EPD	YW EPD	MILK	\$EN	REA/CWT	ACT. IMF
I+0	I+2.2	I+19	I+31	I+15	+20	N/A	N/A
Dam's Information	TEAT/UDDER	CE	DIS	BONSMA	FLESH		
Provided by SVR	45/40	1	1	2	2		

This Cow Bull prospect is a product of our E.T. Program and is sired by F0203, a reference sire whose semen was sold by the American Angus Association, which was used here. This mating capitalizes on the best maternal genetics from the Emulation and Wye and adds the power of F0203. Lot 30 will produce masculine bull calves, with muscle and fleshing ability, and feminine, fertile, maternally wedge-shaped females. A maternal sister sired by Manning of Wye sold for \$15,000 and three bulls of this same mating averaged \$10,000 in our 2018 production sale. All three of those have seen use in our herd the last two years! One of those brothers was selected by Mosier Angus of Spalding, NE and Epling Angus in IA and is seeing heavy use! Flush Mate to Lots 54 and 66.

SVR CONTINUED MEMENTO 8157F [OHF]

31 Birth Date: 4-11-2018 Bull 19563209 Tattoo: 8157F
 SVR Continued of Rose 1158 Federal of Wye
 +17401331 Clova of Wye Umf 8044
 Sinclair Memento 8RL63 +*Sinclair Rito Legacy 3R9
 16165529 N Bar BC Emulation G2219

CE	BW EPD	WW EPD	YW EPD	MILK	\$EN	REA/CWT	ACT. IMF
+1	+2.0	+27	+47	+12	+19	1.06	1.08
Dam's Information	TEAT/UDDER	CE	DIS	BONSMA	FLESH		
Provided by SVR	45/45	1	2	4	2		

A great herd sire Cow Bull prospect for use on mature cows. He is a tremendous blend of Wye, Rito, and Emulation. His dam is a broody, long-bodied, 12-year-old matron of our herd and his sire has left us with as many daughters in production as any other bull under heavy competition in a natural service environment. Tried and true combination of genetics in this bull...a large part of our cows carry a similar mix of old proven blood.



**SINCLAIR LADY IDA 04F3 B154 -
DAM OF LOTS 32 & 43**

SVR PRINCE EDDA 8159F

32 Birth Date: 4-11-2018 Bull +*19434951 Tattoo: 8159F
 Prince of Malpas Jumor Eric of Southburn
 2776941 Pride of Malvita
 Sinclair Lady Ida 04F3 B154 #Emulation N Bar 5522
 +14594377 N Bar Lady Ida X2912

CE	BW EPD	WW EPD	YW EPD	MILK	\$EN	REA/CWT	ACT. IMF
I+9	I-2.0	I+3	I-1	I+18	+25	1.13	.68
Dam's Information	TEAT/UDDER	CE	DIS	BONSMA	FLESH		
Provided by SVR	45/45	1	2	3	2		

This will be one of the last chances to buy a Herd Sire out of our Foundation Female 04F3. 04F3 was in production until she was over 14 years of age and left us with over 25 daughters and 8 sons. This is probably one of our favorite crosses on 04F3. Lot 32 is sired by Prince of Malpas of which there is little or no semen available. Imported from Scotland, Prince was all Bull. He had extremely high libido and could cover over 50 cows a season. Our Prince calves born in the blizzard of 2018 had extremely high vigor at birth; probably the best we have seen. When you study Wye breeding, there is usually one or more Prince daughters in the pedigree. Lodge, Federal, and Luria of Wye are some of his most influential descendants. Full brother to Lot 43.

SVR FOREVER 4148 ERIC 8160F

33

Birth Date: 4-11-2018

Bull 19434950

Tattoo: 8160F

SVR Eric Forever 4148
+*18317668

#Candolier Forever 376
+Coleman Dixie Erica 143

SVR Erica of Rose 644-0509
18648925

+JGM Sure Thing 614S
+BAX Aspen Lady 644-72

CE	BW EPD	WW EPD	YW EPD	MILK	\$EN	REA/CWT	ACT. IMF
+10	-3.1	+19	+31	+22	+16	1.23	1.02
Dam's Information		TEAT/UDDER	CE	DIS	BONSMA	FLESH	
Provided by SVR		45/45	1	1	2	3	

A great Heifer Bull prospect with a solid foundation of old proven cows to help assure success. His dam is 10 years of age and is sired by an own son of EXT who stems back to a three-quarter sister of 6807. His maternal granddam is 16 and still in production. Lot 33's paternal granddam Coleman Dixie Erica 143 was in production until her midteens. Lot 33 will sire refined, sharp-fronted females with a maternal wedge of efficiency.

SVR LODGE 2043 KING 8165F

36

Birth Date: 4-12-2018

Bull *19563213

Tattoo: 8165F

SVR Range Master 2043
+*17685366

Lodge of Wye
+Sinclair Lady Ida 04F3 B154

SVR QM of Rose 0507-3589
18946737

Legend of Volga 0413
SVR Queen M of Rose 327-0507

CE	BW EPD	WW EPD	YW EPD	MILK	\$EN	REA/CWT	ACT. IMF
+8	-1.1	+20	+30	+20	+18	1.14	1.70
Dam's Information		TEAT/UDDER	CE	DIS	BONSMA	FLESH	
Provided by SVR		45/45	1	1	3	3	

This Heifer Bull has a great pedigree that combines Lodge, 5522, EXT E31, Viking GD60, Canadian Colossal, and OCC Homer. Very few bulls in today's Angus gene pool have that many female makers in their pedigree. The sires in this bull will continue to sire the same kind of cattle as they have for decades. History doesn't lie.

SVR EUREKA Z284 PAUL 8161F

34

Birth Date: 4-11-2018

Bull 19563265

Tattoo: 8161F

Limestone Eureka Z284
17229474

##*OCC Eureka 865E
+OCC Pollyanna 669U

SVR Pollyanna 845M-4514
+18885230

##*OCC Paxton 730P
OCC Pollyanna 845M

CE	BW EPD	WW EPD	YW EPD	MILK	\$EN	REA/CWT	ACT. IMF
+6	+1.4	+36	+58	+22	+14	1.08	1.09
Dam's Information		TEAT/UDDER	CE	DIS	BONSMA	FLESH	
Provided by SVR		45/45	1	1	4	2	

Here is a Cow Bull for the rancher wanting to add muscle and fleshing ability to his cowherd and calf crop! Z284 sons have been popular at our sales and his daughters are becoming solid producing young cows. Lot 34 is double bred Eureka and Focus and has plenty of F0203 in his pedigree. We have retained 3 out of 4 calves out of Lot 34's mother!

SVR RANGER ENCHANTED 8166F

37

Birth Date: 4-9-2018

Bull 19563259

Tattoo: 8166F

Sinclair Bush Ranger 9X16
+16361050

##N Bar Emulation EXT
#N Bar Enchantress 4908

SVR Enchantress 3F1-4520
+18910681

#Candolier Forever 376
+SCC Enchantress 3F1 X412

CE	BW EPD	WW EPD	YW EPD	MILK	\$EN	REA/CWT	ACT. IMF
+15	-4.6	+9	+17	+25	+14	1.08	2.21
Dam's Information		TEAT/UDDER	CE	DIS	BONSMA	FLESH	
Provided by SVR		45/40	1	1	3	4	

This Heifer Bull was sired by our Foundation Herd Bull Bush Ranger, a full brother to NBar Shadow. Bush Ranger sires females similar to Shadow, but more moderate of frame and bettered uddered. We strongly believe that Bush Ranger sires excellent bulls. Lot 37's Foundation Female dam is an own daughter of Candolier Forever 376 out of 3F1 making this an uncle/niece mating to add prepotency to this bull. We don't think there is a better bull in the country to sire exceptional females, because you will never find a more maternal pedigree! He's a full brother in blood to Lots 10 and 13. If you want to improve your herd quickly, buy all three and put them to work.

SVR EUREKA 3720 DELIA 8164F

35

Birth Date: 4-12-2018

Bull 19563304

Tattoo: 8164F

SVR Eureka Edda 3720
+*18297538

##*OCC Eureka 865E
+Sinclair Lady Ida 04F3 B154

SVR Delia of Rose 151-5561
+18908656

##N Bar Emulation EXT
+Octoraro Delia 151

CE	BW EPD	WW EPD	YW EPD	MILK	\$EN	REA/CWT	ACT. IMF
+3	+1.0	+25	+38	+21	+16	1.00	2.18
Dam's Information		TEAT/UDDER	CE	DIS	BONSMA	FLESH	
Provided by SVR		45/45	1	1	3	4	

A Heifer Bull with a unique blend of F0203, Fabron, 5522, and EXT. These four bulls are highly maternal and known for their daughters. His dam is a productive young EXT cow and we have retained all three of her progeny. Lot 35's mother is feminine and refined with a good tight udder with excellent teat size and placement. She fits the Bonsma mold.

SVR F0203 LOU 8168F

38

Birth Date: 4-13-2018

Bull +19588390

Tattoo: 8168F

PBC 707 1M F0203
#8252710

#RR Rito 707
Evocate Princess T

Lucy of Volga 0420
14825101

+Matson of Volga 2006
#Lucy of Volga 9401

CE	BW EPD	WW EPD	YW EPD	MILK	\$EN	REA/CWT	ACT. IMF
+13	+1.7	+16	+31	+15	+20	1.16	2.18
Dam's Information		TEAT/UDDER	CE	DIS	BONSMA	FLESH	
Provided by SVR		40/40	1	1	2	3	

This Cow Bull is a product of our E.T. program. Lot 38 is a perfect combination of Rito on Wye with E31 providing the Emulation base. His sire is the best female making son of 707 and his dam is a tremendous 16-year-old cow whose progeny boast a combined ratio of 104 for both WW and YW as well as 101% for %IMF and 105% for REA. Here is solid, proven performance and carcass quality with longevity. Full brother to Lots 61 and 63.

SVR CONT 5189 BURGESS 8169F

39 Birth Date: 4-13-2018 Bull 19563341 Tattoo: 8169F
 SVR Continued Edda 5189 +SVR Continued of Rose 1158
 *18613036 Lady Ida 92 of Volga 0688
 SVR Burgess of Rose 604-2561 #+OCC Emblazon 854E
 +18887840 +BAX Aberdeen Bonnie 604-5104

CE	BW EPD	WW EPD	YW EPD	MILK	\$EN	REA/CWT	ACT. IMF
-1	+3.0	+22	+36	+16	+18	1.24	3.03
Dam's Information		TEAT/UDDER	CE	DIS	BONSMA	FLESH	
Provided by SVR		45/45	1	1	3	3	

With the success of SVR Forever Edda 4110 in Montana and South Dakota, we decided to retain this bull's maternal sibling by one of our best sires 1158 (who suffered an early death doing what he enjoyed). 1158 sires meaty bulls and soft, refined and fertile females. This Cow Bull is backed by a solid 8-year-old dam that is also a product of E.T. program, who has produced several sale bulls and heifers in our herd. Lot 39's dam continues to transmit the maternal goodness of our Foundation Female 604! This bull smoothly blends Wye, Shoshone, and Traveler into a ground covering, mother cow maker.



5637 3/4 SIB TO LOT 39 AND BRED SIMILIARLY TO LOTS 5 & 6.

SVR CONTINUED PRIDE 8171F

41 Birth Date: 4-13-2018 Bull 19563296 Tattoo: 8171F
 SVR Continued of Rose 1158 Federal of Wye
 +17401331 Clova of Wye Umf 8044
 Sinclair C Pride 8XE49 3G32 +*Sinclair Excellency 5X25
 16165534 Sinclair C Pride 3G32 J99

CE	BW EPD	WW EPD	YW EPD	MILK	\$EN	REA/CWT	ACT. IMF
+3	+1.5	+22	+45	+13	+18	0.99	2.38
Dam's Information		TEAT/UDDER	CE	DIS	BONSMA	FLESH	
Provided by SVR		45/45	1	1	3	2	

Here is a rare chance to buy a Cow Bull from a consistently top producing 12-year-old cow who has sent most of her calves to the replacement pen, instead of the bull sale ring. We retained one of her sons, 4112, to be a herd sire and to be the replacement for Bush Ranger. This bull will pass on longevity and maternal goodness. His sire left us almost 60 daughters and competed to breed cattle until he was 8.

SVR CONTINUED KING 8173F

42 Birth Date: 4-13-2018 Bull 19563309 Tattoo: 8173F
 SVR Continued of Rose 1158 Federal of Wye
 +17401331 Clova of Wye Umf 8044
 SVR Queen of Rose 0520-2517 +Sinclair Bush Ranger 9X16
 18946740 SVR Queen of Rose 7V72-0520

CE	BW EPD	WW EPD	YW EPD	MILK	\$EN	REA/CWT	ACT. IMF
+2	+1.7	+22	+37	+18	+17	1.10	3.01
Dam's Information		TEAT/UDDER	CE	DIS	BONSMA	FLESH	
Provided by SVR		45/45	1	1	2	3	

This Heifer Bull prospect is out of an outstanding 8-year-old daughter by Sinclair Bush Ranger back to Embody 97 who has produced some of our best heifers and bulls. Sired by 1158 who has left almost 60 daughters in our herd, Lot 42 will sire functional, efficient, easy keeping, moderate, good uddered, long lived females and top notch bulls!

SVR EUREKA 3720 EDEN 8170F

40 Birth Date: 4-13-2018 Bull 19563305 Tattoo: 8170F
 SVR Eureka Edda 3720 #+*OCC Eureka 865E
 +*18297538 +Sinclair Lady Ida 04F3 B154
 SVR Eden of Rose 656-5566 #Paramont Ambush 2172
 +19116699 FWR 975 Lady Viking 656

CE	BW EPD	WW EPD	YW EPD	MILK	\$EN	REA/CWT	ACT. IMF
-1	+1.9	+32	+48	+25	+11	1.02	.70
Dam's Information		TEAT/UDDER	CE	DIS	BONSMA	FLESH	
Provided by SVR		45/40	1	1	2	3	

This powerful Cow Bull is the result of mating two products of our E.T. program. His sire's flush brothers are uniform peas in a pod selected by the Arabia Ranch in 2016. His dam's flush is the same; all the flush sisters were angular and feminine with a Bonsma wedge. There is no better way to breed for consistency than to stack consistency.

SVR PRINCE EDDA 8176F

43 Birth Date: 4-15-2018 Bull +*19434949 Tattoo: 8176F
 Prince of Malpas Jumor Eric of Southburn
 2776941 Pride of Malvita
 Sinclair Lady Ida 04F3 B154 #Emulation N Bar 5522
 +14594377 N Bar Lady Ida X2912

CE	BW EPD	WW EPD	YW EPD	MILK	\$EN	REA/CWT	ACT. IMF
I+9	I-2.0	I+3	I-1	I+18	+25	1.10	2.34
Dam's Information		TEAT/UDDER	CE	DIS	BONSMA	FLESH	
Provided by SVR		45/45	1	2	3	2	

This will be one of the last chances to buy a Herd Sire out of our Foundation Female 04F3. 04F3 was in production until she was over 14 years of age and left us with over 25 daughters and 8 sons. This is probably one of our favorite crosses on 04F3. Lot 43 is sired by Prince of Malpas of which there is little or no semen available. Imported from Scotland, Prince was all bull. He had extremely high libido and could cover over 50 cows a season. Our Prince calves born in the blizzard of 2018 had extremely high vigor at birth; probably the best we have seen. When you study Wye breeding, there is usually one or more Prince daughters in the pedigree. Lodge, Federal, and Luria of Wye are some of his most influential descendants. Full brother to Lot 32.

SVR PRINCE BLACK 8179F

44	Birth Date: 4-16-2018	Bull *19434953	Tattoo: 8179F
Prince of Malpas 2776941	Jumor Eric of Southburn Pride of Malvita		
Blackbird of Volga 0740 16195934	Churchill of Wye Blackbird of Volga 9511		

CE	BW EPD	WW EPD	YW EPD	MILK	SEN	REA/CWT	ACT. IMF
1+5	1-3	1-2	1-11	1+13	+28	1.38	1.17
Dam's Information	TEAT/UDDER	CE	DIS	BONSMA	FLESH		
Provided by SVR	45/40	1	1	2	2		

There may not be a better bull in the sale for building old school Wye females with an E31 twist. A Cow Bull prospect, Lot 44 is double bred Prince of Malpas. He combines Prince with Colleen, one of the best cows to ever walk the Wye plantation. His dam is one of our most proven donors who has sons in the sale by F0203. Her sons by Rito, Wye and Emulation bloodlines have all been customer favorites. We promise you there is not another bull bred anywhere close to him in existence. This bull is all bull.

SVR CONT 5189 EMMITT 8183F

47	Birth Date: 4-16-2018	Bull 19563343	Tattoo: 8183F
SVR Continued Edda 5189 *18613036	+SVR Continued of Rose 1158 Lady Ida 92 of Volga 0688		
SVR Emma of Rose 678-2587 18910922	*Jad Peter X414-6157 #Sitz Emma E 678		

CE	BW EPD	WW EPD	YW EPD	MILK	SEN	REA/CWT	ACT. IMF
-5	+4.4	+18	+30	+15	+19	1.04	.98
Dam's Information	TEAT/UDDER	CE	DIS	BONSMA	FLESH		
Provided by SVR	45/45	1	1	3	4		

Cow Bull prospect who will sire longevity, fertility and production. 1158 competed to breed cows until he was 8. His mother, our 688 cow, was in production until she was 13 and was a very good Foundation Female for us. Jad Peter's dam, 6157, lived until 21, and 678 lived to be 16. We have already retained 3 daughters by Lot 47's dam in our herd. This is a great blend of Wye and Emulation on a Traveler base.

SVR CONTINUED K B 8180F

45	Birth Date: 4-16-2018	Bull 19563295	Tattoo: 8180F
SVR Continued of Rose 1158 +17401331	Federal of Wye Clova of Wye Umf 8044		
SVR KBTY of Rose 8MB30-1518 18556710	*BAX Embodly 97-844 Sinclair K Bty 8MB30 2J10		

CE	BW EPD	WW EPD	YW EPD	MILK	SEN	REA/CWT	ACT. IMF
+8	-6	+17	+28	+17	+18	1.12	1.54
Dam's Information	TEAT/UDDER	CE	DIS	BONSMA	FLESH		
Provided by SVR	45/40	1	1	2	2		

This great Heifer Bull prospect comes from a mating we have successfully made many times. The female side of this equation is moderate, pretty and angular fronted, easy keeping, and very Bonsma in style with good udders and high maternal qualities. You will keep his daughters.

SVR CORNERSTONE EDDA 8186F

48	Birth Date: 4-17-2018	Bull *19563203	Tattoo: 8186F
SVR Cornerstone of Rose 1112 *17381466	#*Sinclair Emulation 5522 XP +SCC Enchantress 3F1 X412		
Lady Ida 92 of Volga 0688 15496146	Libido of Volga 9923 Lady Ida 92 of Volga 0336		

CE	BW EPD	WW EPD	YW EPD	MILK	SEN	REA/CWT	ACT. IMF
-3	+3.1	+24	+40	+17	+17	0.95	1.93
Dam's Information	TEAT/UDDER	CE	DIS	BONSMA	FLESH		
Provided by SVR	45/45	1	1	4	4		

This Cow Bull prospect by 1112 and out of our good 688 cow really pulls forward the goodness of Emulation NBar 5522, who we have found to be the most serviceable in the range environment. 1112 is 9 and still competing to cover cows. We have used him and his brother quite heavily during the last two years. His dam has been a 13-year-old proven Foundation Female who has several sons used in registered herds in Montana and South Dakota. Lot 48 will make someone a very nice herd sire.

SVR PRINCE KING 8182F

46	Birth Date: 4-16-2018	Bull *19434954	Tattoo: 8182F
Prince of Malpas 2776941	Jumor Eric of Southburn Pride of Malvita		
SVR Queenmotherofrose 0559 +18302597	Fahren of Wye Umf 5830 #Queen Mother of Wye 7829		

CE	BW EPD	WW EPD	YW EPD	MILK	SEN	REA/CWT	ACT. IMF
1+8	1-1.0	1-7	1-18	1+12	+31	1.13	.45
Dam's Information	TEAT/UDDER	CE	DIS	BONSMA	FLESH		
Provided by SVR	45/45	1	1	3	4		

This is a tremendous Heifer Bull with an outstanding pedigree and phenotype. He is sired by Prince, out of a Fahren daughter. Fahren's sire was out of a Prince daughter. The combination of Prince daughters means that this is a herd sire that will sire excellent calf vigor.



SVR EUREKA EDDA 3720 - SIRE TO LOTS 35, 40, 76 AND 86.

SVR EUREKA Z284 JUANADA8188F

49 Birth Date: 4-17-2018 Bull 19563264 Tattoo: 8188F
 Limestone Eureka Z284 #+*OCC Eureka 865E
 17229474 +OCC Pollyanna 669U
 SVR Juanadaofrose E5403-4529 #*N Bar Emulation EXT
 +18908649 +Indreland Juanada Anne 5403

CE	BW EPD	WW EPD	YW EPD	MILK	SEN	REA/CWT	ACT. IMF
+0	+2.8	+39	+63	+23	+11	0.98	2.64
Dam's Information		TEAT/UDDER	CE	DIS	BONSMA	FLESH	
Provided by SVR		45/45	1	1	3	3	

This Cow Bull follows the historically proven nick of Traveler and Emulation, which makes some of the most productive, fertile, fleshy, broody cows. This Bull literally sings "maternal" with Candolier Forever 376 in his pedigree. He should sire calves with a touch more femininity and extension yet keep the OCC style. His mother's first calf sold to the Warren Ranch at Seneca in 2018.

SVR FOREVER 4134 BLACK 8192F

51 Birth Date: 4-17-2018 Bull 19563325 Tattoo: 8192F
 SVR Revolution 4134 #Candolier Forever 376
 +*18317662 +SCC Enchantress 3F1 X412
 SVR Blkbird Ofrose 8V58-1511 *BAX Embody 97-844
 18556714 Sinclair Blkbird 8V58 H369

CE	BW EPD	WW EPD	YW EPD	MILK	SEN	REA/CWT	ACT. IMF
+9	-1.5	+29	+50	+23	+12	0.94	1.98
Dam's Information		TEAT/UDDER	CE	DIS	BONSMA	FLESH	
Provided by SVR		45/40	1	1	3	2	

This Heifer Bull's mother, our 1511 cow, will soon be in the donor pen. Lot 51 is her fourth son to go through the ring. Her fifth son was just weaned and will be sold in 2021. 1511 at 9 is working on being our most productive Embody daughter. You can see her sons at the Arabia Ranch, Wood Lake, NE; Olson Ranch, Bartlett, NE; and the Henderson Ranch, Whitman, NE. Lot 51 is a great bull to add longevity, production, and will make some of the best females in your herd.

SVR CONTINUED 5189 K B 8191F

50 Birth Date: 4-15-2018 Bull 19563338 Tattoo: 8191F
 SVR Continued Edda 5189 +SVR Continued of Rose 1158
 *18613036 Lady Ida 92 of Volga 0688
 SVR K Bty of Rose 6BT54-1561 Octoraro Embassy 860
 18902965 Sinclair K Bty 6BT54

CE	BW EPD	WW EPD	YW EPD	MILK	SEN	REA/CWT	ACT. IMF
-4	+4.2	+29	+50	+17	+16	1.07	1.86
Dam's Information		TEAT/UDDER	CE	DIS	BONSMA	FLESH	
Provided by SVR		45/45	1	1	2	3	

This very nice Heifer Bull stems from a very productive cow family. His maternal grand dam, who produced until she was 13, had four sons that sold in our sale and left us with several daughters. His dam, 1561, is still producing at 9 years of age and has left us with several top end daughters, as well to continue the line. She also weaned one of the heaviest bull calves in the 2019 calf crop by Quintes of Wye, our top notch Wye herd sire! His sire's dam was in production until 13, as well.

SVR PRIDE 70 ENCHANTED 8193F

52 Birth Date: 4-17-2018 Bull +*19576710 Tattoo: 8193F
 Emulous Pride 70 [DMF-RDF] Emulous Bob of K Pride
 4285114 Gaines Lady
 SCC Enchantress 3F1 X412 #Emulation N Bar 5522
 +14388183 #N Bar Enchantress 4908

CE	BW EPD	WW EPD	YW EPD	MILK	SEN	REA/CWT	ACT. IMF
1+1	1-1.3	+9	+20	1+10	+21	1.06	1.05
Dam's Information		TEAT/UDDER	CE	DIS	BONSMA	FLESH	
Provided by SVR		45/40	1	1	3	4	

This great Cow Bull herdsire is a half sib to Ankonian Dynamo. We made this breeding as a first step in refreshing 5522 genetics.



SCC ENCHANTRESS 3F1 X412

SVR PRINCE KING 8194F

53 Birth Date: 4-17-2018 Bull *19434952 Tattoo: 8194F

Prince of Malpas 2776941 Jumor Eric of Southburn Pride of Malvita

Queen Mother of Wye UMF 9141 #Bonanza of Wye 15083606 #Queen Mother of Wye 7829

CE	BW EPD	WW EPD	YW EPD	MILK	SEN	REA/CWT	ACT. IMF
I+4	I-1.0	I-8	I-21	I+14	+29	1.47	1.20
Dam's Information	TEAT/UDDER	CE	DIS	BONSMA	FLESH		
Provided by SVR	35/35	1	1	2	3		

Heifer Bull. We used Prince of Malpas in our IVF program because many of the Wye Plantation's best cattle are backed by a Prince daughter. We believed that a mating of Prince with a daughter of Blythe, the highest production Wye cow with a combined 11,020 pounds on eighteen calves would create this bull who will make outstanding females and feeders.

SVR FOREVER 4148 KING 8197F

56 Birth Date: 4-18-2018 Bull *19563246 Tattoo: 8197F

SVR Eric Forever 4148 #Candolier Forever 376
+*18317668 +Coleman Dixie Erica 143

BAX Alicia Queen 784-6310 #Paramont Ambush 2172
+14758573 Aspen Colossal Queen M 631

CE	BW EPD	WW EPD	YW EPD	MILK	SEN	REA/CWT	ACT. IMF
+1	+7	+30	+49	+24	+13	1.02	.48
Dam's Information	TEAT/UDDER	CE	DIS	BONSMA	FLESH		
Provided by SVR	45/40	1	1	2	2		

Cow Bull prospect. We do not offer any bull that we would not keep. Lot 56 is a bull that we really don't want sell. He is the last natural calf by the 784 cow who was in production until 15. She has been a Foundation Female in our program, and we are using three of her sons to great effect. Her son 1201 has left us many daughters and put a number of bulls through the sale. The blend of Coleman Rito 143 and 784 has worked before and works again here as this is three-quarter sib to our outstanding 1201 bull.

SVR F0203 RITO BLACK 8195F

54 Birth Date: 4-17-2018 Bull *19588385 Tattoo: 8195F

PBC 707 1M F0203 #RR Rito 707
#8252710 Evocate Princess T

Blackbird of Volga 0740 Churchill of Wye
16195934 Blackbird of Volga 9511

CE	BW EPD	WW EPD	YW EPD	MILK	SEN	REA/CWT	ACT. IMF
I+0	I+2.2	I+19	I+31	I+15	+20	1.21	3.20
Dam's Information	TEAT/UDDER	CE	DIS	BONSMA	FLESH		
Provided by SVR	45/40	1	1	2	2		

This Cow Bull prospect is a product of our E.T. Program and is sired by F0203. F0203 is a reference sire for the American Angus Association. The Association sold the semen used in these flushes. This mating capitalizes on the best maternal genetics from Emulation and Wye, while adding the power of F0203. Lot 54 will produce masculine bull calves, with muscle and fleshing ability, and feminine, fertile, maternally wedge-shaped females. A maternal sister sired by Manning of Wye sold for \$15,000 and three bulls of this same mating averaged \$10,000 during our 2018 production sale. Full brother to Lots 30 and 66.

SVR EXPRESS ENCHANTED 8198F

57 Birth Date: 4-18-2018 Bull *19563186 Tattoo: 9198F

Sinclair Express 6V47 N Bar Emulation Ext A1747
15497986 N Bar Queen Mother SCC 2F11

SCC Enchantress 3F1 X412 #Emulation N Bar 5522
+14388183 #N Bar Enchantress 4908

CE	BW EPD	WW EPD	YW EPD	MILK	SEN	REA/CWT	ACT. IMF
+10	-2.1	+32	+52	+10	+16	1.19	2.43
Dam's Information	TEAT/UDDER	CE	DIS	BONSMA	FLESH		
Provided by SVR	45/40	1	1	3	4		

This Heifer Bull prospect has a predictable and dependable pedigree. His full brother sold to the Warren Ranch in 2018. He has two full sisters in our herd. His dam is still producing at 17 with over 20 daughters in our herd. His sire, 6V47, was a dominant sire until age 11. 6V47 has left us with over 30 daughters and sired many of the bulls that we have sold over the years. This is a proven and predictable pedigree offering strong maternal growth and carcass.

SVR PRINCE KING 8196F

55 Birth Date: 4-18-2018 Bull *19434957 Tattoo: 8196F

Prince of Malpas 2776941 Jumor Eric of Southburn Pride of Malvita

Queen Mother of Wye UMF 9141 #Bonanza of Wye 15083606 #Queen Mother of Wye 7829

CE	BW EPD	WW EPD	YW EPD	MILK	SEN	REA/CWT	ACT. IMF
I+4	I-1.0	I-8	I-21	I+14	+29	1.25	2.64
Dam's Information	TEAT/UDDER	CE	DIS	BONSMA	FLESH		
Provided by SVR	35/35	1	1	2	3		

Heifer Bull. We used Prince of Malpas in our IVF program because many of the Wye Plantation's best cattle are backed by a Prince daughter. We believed that a mating of Prince with a daughter of Blythe, the highest production Wye cow with a combined 11,020 pounds on eighteen calves would create this bull who will make outstanding females and feeders.

SVR PRINCE COPELAND 8201F

58 Birth Date: 4-18-2018 Bull *19434955 Tattoo: 8201F

Prince of Malpas 2776941 Jumor Eric of Southburn Pride of Malvita

Copeland of Wye UMF 9753 Bartor of Wye UMF 5609
16405942 Copeland of Wye UMF 9544

CE	BW EPD	WW EPD	YW EPD	MILK	SEN	REA/CWT	ACT. IMF
I+10	I-1.4	I+0	I-9	I+17	+26	1.08	2.30
Dam's Information	TEAT/UDDER	CE	DIS	BONSMA	FLESH		
Provided by SVR	45/40	1	1	3	4		

Heifer Bull. Prince of Malpas participated in our IVF project because the foundation Wye sires, of which Prince is one, had excellent phenotype, very good carcass quality and had all of the maternal qualities we value. You'll find Prince in the pedigree of every top drawer Wye Angus, just as you'll find George of Swiftbrook in the pedigrees of one of Nebraska's most recognized herds. This is a "pure" Wye bull for those of you who desire to add foundation Aberdeen Angus into your herd. The Prince sons are somewhat smaller, so they will definitely moderate a herd. They are phenotypically correct with outstanding libido. Their ribeye is outstanding. You'll also see that their marbling is quite good. 9753, the dam of this bull, is an outstanding individual who has adapted well from the Wye Plantation to the Nebraska Sandhills. She has over ten daughters in our herd and her sons have been well

SVR CONTINUED 5189 KING8202F

59

Birth Date: 4-18-2018

Bull 19563339

Tattoo: 8202F

SVR Continued Edda 5189

*18613036

+SVR Continued of Rose 1158

Lady Ida 92 of Volga 0688

BW
81
ADJ. 205
443
ADJ. SC
36.60

SVR Queen M of Rose9MB2-1701

18902967

+Sinclair Bush Ranger 9X16

SVR Queen M of Rose 186-9MB2

CE	BW EPD	WW EPD	YW EPD	MILK	SEN	REA/CWT	ACT. IMF
+3	+1.0	+17	+28	+18	+17	1.17	2.13
Dam's Information	TEAT/UDDER	CE	DIS	BONSMA	FLESH		
Provided by SVR	45/40	1	2	2	3		

This Heifer Bull pulls together three of the herd sires who are keys to our program. We bred Bush Ranger, Shadow's full brother, on cows sired by our good Embody bull and had phenomenal success. 1158, perhaps our best herd sire, solidifies the maternal goodness is this bull. We have no doubt he will sire moderate-framed, efficient, Bonsma females. His sons should have base width and muscle with added length from Bush Ranger. His dam is a prototypical 9-year-old Bush Ranger daughter.

SVR PRIDE 70 ERIC 8210F

62	Birth Date: 4-21-2018	Bull +*19576707	Tattoo: 8210F						
Emulous Pride 70 [IMF-REF] 4285114	Emulous Bob of K Pride Gaines Lady	<table><tr><td>BW</td></tr><tr><td>89</td></tr><tr><td>ADJ. 205</td></tr><tr><td>431</td></tr><tr><td>ADJ. SC</td></tr><tr><td>22.19</td></tr></table>		BW	89	ADJ. 205	431	ADJ. SC	22.19
BW									
89									
ADJ. 205									
431									
ADJ. SC									
22.19									
BAX Aspen Lady 844-72 #+14758567	#Paramont Ambush 2172 FWR Lady Viking 72								

CE	BW EPD	WW EPD	YW EPD	MILK	SEN	REA/CWT	ACT. IMF
-6	+1.6	+13	+6	+14	+22	1.21	1.05
Dam's Information	TEAT/UDDER	CE	DIS	BONSMA	FLESH		
Provided by SVR	45/35	1	1	2	3		

This Heifer Bull was sired by Emulous Pride 70 who is the ONLY Bull of any breed in the WORLD to be sired by a 100% Certified Meat Sire as well as to sire a 100% Certified Meat Sire himself. Lot 62 is a paternal sibling to Ankonian Dynamo. Lot 62's dam is a model of the ideal Bonsma-style cow. She was in production until 14 and left us multiple herd sires and many top end daughters in our herd.

SVR CONTINUED 5189 ERIC8205F

60	Birth Date: 4-20-2018	Bull 19563345	Tattoo: 8205F						
SVR Continued Edda 5189 *18613036	+SVR Continued of Rose 1158 Lady Ida 92 of Volga 0688	<table><tr><td>BW</td></tr><tr><td>84</td></tr><tr><td>ADJ. 205</td></tr><tr><td>441</td></tr><tr><td>ADJ. SC</td></tr><tr><td>35.66</td></tr></table>		BW	84	ADJ. 205	441	ADJ. SC	35.66
BW									
84									
ADJ. 205									
441									
ADJ. SC									
35.66									
SVR Range Amelia Erica 1602 18011686	+*Coleman Rito 149-8253 +BAX Amelia Erica 764-2785								

CE	BW EPD	WW EPD	YW EPD	MILK	SEN	REA/CWT	ACT. IMF
-2	+2.1	+13	+24	+18	+17	1.00	1.60
Dam's Information	TEAT/UDDER	CE	DIS	BONSMA	FLESH		
Provided by SVR	40/35	1	1	4	3		

The four cows that are the foundation of this Cow Bull prospect have over 45 years of combined production. The power of Rito on Wye has been proven time and time again and is once again proven in this bull.

SVR F0203 RITO LOU 8211F

63	Birth Date: 4-21-2018	Bull +19588391	Tattoo: 8211F						
PBC 707 1M F0203 #8252710	#RR Rito 707 Evocate Princess T	<table><tr><td>BW</td></tr><tr><td>88</td></tr><tr><td>ADJ. 205</td></tr><tr><td>495</td></tr><tr><td>ADJ. SC</td></tr><tr><td>33.19</td></tr></table>		BW	88	ADJ. 205	495	ADJ. SC	33.19
BW									
88									
ADJ. 205									
495									
ADJ. SC									
33.19									
Lucy of Volga 0420 14825101	+Matson of Volga 2006 #Lucy of Volga 9401								

CE	BW EPD	WW EPD	YW EPD	MILK	SEN	REA/CWT	ACT. IMF
+3	+1.7	+16	+31	+15	+20	1.00	2.19
Dam's Information	TEAT/UDDER	CE	DIS	BONSMA	FLESH		
Provided by SVR	40/40	1	1	2	3		

This Cow Bull is a perfect combination of Rito F0203 on Wye with E31 providing the Emulation base. His sire is the best female making son of 707 and his dam is a tremendous 16-year-old cow whose progeny boast a combined ratio of 104 for both WW and YW, 101 for %IMF and 105 for REA. This is proven performance and carcass genetics with longevity. Full brother to Lots 38 and 61.

SVR RITO F0203 LOU 8206F

61

Birth Date: 4-15-2018

Bull +19588392

Tattoo: 8206F

PBC 707 1M F0203

#8252710

#RR Rito 707

Evocate Princess T

Lucy of Volga 0420

14825101

+Matson of Volga 2006

#Lucy of Volga 9401

BW
70
ADJ. 205
551
ADJ. SC
34.50

CE	BW EPD	WW EPD	YW EPD	MILK	SEN	REA/CWT	ACT. IMF
+3	+1.7	+16	+31	+15	+20	1.09	2.54
Dam's Information	TEAT/UDDER	CE	DIS	BONSMA	FLESH		
Provided by SVR	40/40	1	1	2	3		

This Cow Bull is a perfect combination of Rito F0203 on Wye with E31 providing the Emulation base. His sire is the best female making son of 707 and his dam is a tremendous 16-year-old cow whose progeny boast a combined ratio of 104 for both WW and YW, 101 for %IMF and 105 for REA. Full brother to Lots 38 and 63.



LUCY OF VOLGA 0420

SVR RITO BLACK KING 8212F
 64 Birth Date: 4-20-2018 Bull 19563224 Tattoo: 8212F

SVR Hundred Rito Black 3158
 +17973298

Hundred Oaks Rito
 Blackbird of Volga 0740

SVR QM of Rose 9141-3542
 +19095892

George of Swiftbrook
 Queen Mother of Wye UMF 9141

BW
86
ADJ. 205
455
ADJ. SC
32.19

CE	BW EPD	WW EPD	YW EPD	MILK	SEN	REA/CWT	ACT. IMF
+1	+9	+8	+8	+10	+25	1.06	1.90

Dam's Information	TEAT/UDDER	CE	DIS	BONSMA	FLESH
Provided by SVR	45/40	1	1	3	3

Tremendous Cow Bull prospect. Nowhere else in the country will you find Wye foundation genetics from Colleen, Blythe and George of Swiftbrook in a pedigree. Adding one of the best RR Rito 707 sons -- Rito 149 -- and E31 to the pedigree has produced a bull that will build fertile, efficient, grass females, while his sons will have growth and muscle. Lot 64 is a great combination of SVR Foundation Donors 9141 still in production at 15 and 740 who is still in production at 13 years of age. Henderson Ranch selected his brother in our 2019 sale.

SVR RITO 1201 ERIC 8216F
 67 Birth Date: 4-21-2018 Bull 19563279 Tattoo: 8216F

SVR Range Master 1201
 *17390940

+Coleman Rito 149-8253
 +BAX Alicia Queen 784-6310

SVR Erica of Rose 358-1502
 18556711

+Sinclair Bush Ranger 9X16
 BAX Miranda Aspen 358-854

BW
68
ADJ. 205
549
ADJ. SC
35.19

CE	BW EPD	WW EPD	YW EPD	MILK	SEN	REA/CWT	ACT. IMF
+9	-2.2	+28	+40	+23	+13	1.03	3.10

Dam's Information	TEAT/UDDER	CE	DIS	BONSMA	FLESH
Provided by SVR	45/40	1	1	2	3

Heifer Bull. A low-birthweight son of our Herd Sire 1201 who competed for the right to breed cows for 8 years, 1201 still had perfect feet, was sound and in good flesh when he passed. His dam is a long spined, easy keeping, great uddered, 9-year-old daughter of Bush Ranger, the full brother to Shadow. Hard to find pedigrees today built on time tested genetics. Longevity is key here. Metrics might change, but longevity in a pedigree does not.

SVR PRINCE COPELAND 8217F
 68 Birth Date: 4-22-2018 Bull *19434956 Tattoo: 8217F

Prince of Malpas
 2776941

Jumor Eric of Southburn
 Pride of Malvita

Copeland of Wye UMF 9753
 16405942

Bartor of Wye UMF 5609
 Copeland of Wye UMF 9544

BW
90
ADJ. 205
348
ADJ. SC
28.22

CE	BW EPD	WW EPD	YW EPD	MILK	SEN	REA/CWT	ACT. IMF
+10	+1.4	+0	+9	+17	+26	1.37	2.50

Dam's Information	TEAT/UDDER	CE	DIS	BONSMA	FLESH
Provided by SVR	45/40	1	1	3	4

Prince of Malpas participated in our IVF project because the foundation Wye sires, of which Prince is one, had excellent phenotype, very good carcass quality and had all of the maternal qualities we value. You'll find Prince in the pedigree of every top drawer Wye Angus, just as you'll find George of Swiftbrook in the pedigrees of one of Nebraska's most recognized herds. This is a "pure" Wye bull for those of you who desire to add foundation Aberdeen Angus into your herd. The Prince sons are somewhat smaller, so they will definitely moderate a herd. They are phenotypically correct with outstanding libido. Their ribeye is outstanding. You'll also see that their marbling is quite good. 9753, the dam of this bull, is an outstanding individual who has adapted well from the Wye Plantation to the Nebraska Sandhills. She has over ten daughters in our herd and her sons have been well received in many herds across the country.

SVR PRIDE 70 ERIC 8213F
 65 Birth Date: 4-21-2018 Bull *19576705 Tattoo: 8213F

Emulous Pride 70 (DNF-R01)
 4285114

Emulous Bob of K Pride
 Gaines Lady

Coleman Dixie Erica 0284
 +*16881120

#+OCC Great Plains 943G
 +Coleman Dixie Erica 143

BW
90
ADJ. 205
526
ADJ. SC
34.19

CE	BW EPD	WW EPD	YW EPD	MILK	SEN	REA/CWT	ACT. IMF
+1	+1	+13	+26	+10	+23	1.02	1.48

Dam's Information	TEAT/UDDER	CE	DIS	BONSMA	FLESH
Provided by SVR	45/40	1	1	3	1

This Heifer Bull was sired by Emulous Pride 70 who is the ONLY Bull of any breed in the WORLD to be sired by a 100% Certified Meat Sire as well as to sire a 100% Certified Meat Sire himself. Lot 65 is a paternal sibling to Ankonian Dynamo. We think his dam, Coleman Dixie Erica 0281 is the best daughter of our foundation female, Coleman Dixie Erica 143. This bull will sire calves with a great combination of carcass quality and essential maternal function.

SVR FABRON3124 COPELAND8223F
 69 Birth Date: 4-25-2018 Bull *19563320 Tattoo: 8223F

SVR Fabron 3124
 +*18016166

Fabron of Wye
 Queen Mother of Wye UMF 9141

SVR CopelandofRose 0573-6509
 *18946779

*SVR Range Master 1201
 +SVR Copelandofrose 7546-0573

BW
71
ADJ. 205
486
ADJ. SC
32.35

CE	BW EPD	WW EPD	YW EPD	MILK	SEN	REA/CWT	ACT. IMF
+0	+1	+11	+13	+15	+22	1.15	1.46

Dam's Information	TEAT/UDDER	CE	DIS	BONSMA	FLESH
Provided by SVR	45/45	1	1	3	4

Heifer Bull with a foundation pedigree. His father, our Herd Sire 3124 by Fabron of Wye, was the high selling bull in our 2015 sale. Some people have described 3124 as one of the best bulls with a Wye pedigree. His dam is a nice productive young cow who is a granddaughter of Coleman Rito 149. Her full brother, SVR Range Master 0127, was purchased by Jeremy Woepel of Chambers, NE to be used on a Rito influenced cowherd. We rarely offer bulls out of young cows, unless the young cow is a standout. This young cow is a standout with a proven pedigree.

SVR F0203 RITO BLACK 8214F
 66 Birth Date: 4-21-2018 Bull +19588383 Tattoo: 8214F

PBC 707 1M F0203
 #8252710

#RR Rito 707
 Evocate Princess T

Blackbird of Volga 0740
 16195934

Churchill of Wye
 Blackbird of Volga 9511

BW
92
ADJ. 205
528
ADJ. SC
34.19

CE	BW EPD	WW EPD	YW EPD	MILK	SEN	REA/CWT	ACT. IMF
+0	+2.2	+19	+31	+15	+20	0.94	1.44

Dam's Information	TEAT/UDDER	CE	DIS	BONSMA	FLESH
Provided by SVR	45/40	1	1	2	2

This Cow Bull prospect is a product of our E.T. Program and is sired by F0203, a reference sire whose semen was sold by the American Angus Association, which was used here. This mating capitalizes on the best maternal genetics from the Emulation and Wye and adds the power of F0203. Lot 66 will produce masculine bull calves, with muscle and fleshing ability, and feminine, fertile, maternally wedge-shaped females. A maternal sister sired by Manning of Wye sold for \$15,000 and three bulls of this same mating averaged \$10,000 on our 2018 production sale! Flush Mate to Lots 30 and 54.

SVR TRAVELER 23-4 EDDA 8226F

70 Birth Date: 4-26-2018 Bull 19578752 Tattoo: 8226F

QAS Traveler 23-4 #Band 234 of Ideal 3163
#9250717 QAS Blackbird Eve 601 1

SVR Ladylda of Rose04F3-6510 #Rito 054 GDAR
+18922510 +Sinclair Lady Ida 04F3 B154

CE	BW EPD	WW EPD	YW EPD	MILK	SEN	REA/CWT	ACT. IMF
+3	+3	+17	+32	+24	+15	1.11	.43
Dam's Information		TEAT/UDDER	CE	DIS	BONSMA	FLESH	
Provided by SVR		45/45	1	2	4	5	

Well-developed Heifer Bull who is a son of Traveler 23-4 out of a Rito 054 GDAR daughter from our great 04F3 cow. This a solid and proven pedigree.

SVR EUREKA 1175 DELIA 8237F

73 Birth Date: 4-28-2018 Bull 19563285 Tattoo: 8237F

SVR Abundant of Rose 1175 #+*OCC Eureka 865E
+*17394567 +BAX Aberdeen Bonnie 604-5104

SVR Delia of Rose 1591-5520 *Leverett of Wye UMF 10462
19116496 +SVR Delia of Rose 723-1591

CE	BW EPD	WW EPD	YW EPD	MILK	SEN	REA/CWT	ACT. IMF
+6	-.5	+20	+28	+18	+18	1.03	1.70
Dam's Information		TEAT/UDDER	CE	DIS	BONSMA	FLESH	
Provided by SVR		45/45	1	2	4	4	

Heifer Bull that is a great blend of maternal function and meat and muscle. His sire, 1175, is a son of Eureka that melds nicely with Rito 707. Adding traditional Wye maternal genetics through Leverett of Wye gives a strong maternal finish to excellent carcass traits. Lot 73 will defy the genetic antagonisms of milk and muscle as his pedigree blends both into one industry proven package of Rito/Wye, which made the West's cattle industry

SVR RANGER 4112 KING 8231F

71 Birth Date: 4-27-2018 Bull 19563366 Tattoo: 8231F

SVR Proud Ranger 4112 +Sinclair Bush Ranger 9X16
18279672 Sinclair C Pride 8XE49 3G32

BAX Megan Alicia 457-734 #OCC Magnitude 805M
16097547 +BAX Alicia Queen 734-6310

CE	BW EPD	WW EPD	YW EPD	MILK	SEN	REA/CWT	ACT. IMF
+7	-1.3	+25	+45	+20	+14	1.21	2.77
Dam's Information		TEAT/UDDER	CE	DIS	BONSMA	FLESH	
Provided by SVR		45/35	1	1	3	2	

Heifer Bull that is the product of repeated stacking of EXT, Rito, Traveler that has all of the profitable function of the traditional Angus breed.

SVR FOREVER 4148 BLACK 8238F

74 Birth Date: 4-28-2018 Bull 19563335 Tattoo: 8238F

SVR Eric Forever 4148 #Candolier Forever 376
+*18317668 +Coleman Dixie Erica 143

SVR Blkbird of ROSE8PS3-2534 *BAX Embody 97-844
18885218 Sinclair Blkbird 8PS3 1U3

CE	BW EPD	WW EPD	YW EPD	MILK	SEN	REA/CWT	ACT. IMF
+7	-.6	+23	+42	+26	+12	1.23	2.18
Dam's Information		TEAT/UDDER	CE	DIS	BONSMA	FLESH	
Provided by SVR		45/45	1	1	3	2	

This Heifer Bull out of one of our best Embody daughters, who is 8 years old with her second bull in one of our sales. Last year her son was a sale highlight with spirited bidding won by the Arabia Ranch. She has several daughters in our herd. Her 2019 heifer calf had one of the highest WW. Combining Candolier Forever 376 with 6807 on the top side is a perfect blend of muscle and maternal strength.

SVR QUINTES ERIC 8233F

72 Birth Date: 4-27-2018 Bull 19563312 Tattoo: 8233F

Quintes of Wye UMF 10502 Cyrus of Wye
+17782881 Queen Mother of Wye UMF 9141

SVR Erica of Rose 644-2599 +Sinclair Bush Ranger 9X16
18946810 +BAX Aspen Lady 644-72

CE	BW EPD	WW EPD	YW EPD	MILK	SEN	REA/CWT	ACT. IMF
+5	-1.2	-2	-11	+19	+22	1.29	2.56
Dam's Information		TEAT/UDDER	CE	DIS	BONSMA	FLESH	
Provided by SVR		45/45	1	1	4	4	

Heifer Bull. The sire of Lot 72 is Quintes, our main Wye herdsire. We ask that you come to the Ranch and see Quintes. . . he is so stout. Over each of the last two seasons, we have bred over 60 cows a year to him. In Quintes, you see the strength of Prince of Malpas with the added maternal strength of two of the best Wye cows - Blythe and Colleen. Quintes' sire group in 2019 was one of our heaviest weaning groups. They are moderate, deep, thick, and yet still angular. In Lot 72's pedigree 9141 is 15 and still working, 644 is 16 and still working, and Bush Ranger is 11 and still covering cows!

SVR RITO 1201 PRIDE 8239F

75 Birth Date: 4-30-2018 Bull 19563352 Tattoo: 8239F

SVR Range Master 1201 +*Coleman Rito 149-8253
*17390940 +BAX Alicia Queen 784-6310

SVR Pride of Rose 189-0542 #+OCC Emblazon 854E
+18631972 BAX Ebony Angelica 189-115

CE	BW EPD	WW EPD	YW EPD	MILK	SEN	REA/CWT	ACT. IMF
+7	-.9	+31	+47	+22	+12	1.02	1.75
Dam's Information		TEAT/UDDER	CE	DIS	BONSMA	FLESH	
Provided by SVR		45/40	1	1	4	2	

Long spined Heifer Bull out of a productive and moderate 10-year-old Emblazon daughter. Lot 75 is her second bull to make the sale cut, and she weaned one of the heaviest bulls by SVR Rito Black 6136 in our 2019 calf crop. Foundation Rito blood on Wye/Shoshone works like peanut butter and jelly.

SVR 76 SVR EUREKA 3720 ERIC 8243F

Birth Date: 5-1-2018

Bull 19563302

Tattoo: 8243F

SVR Eureka Edda 3720
+*18297538

#*OCC Eureka 865E
+Sinclair Lady Ida 04F3 B154

SVR Erica of Rose 844-4579
+18910672

#Candolier Forever 376
#+BAX Aspen Lady 844-72

CE	BW EPD	WW EPD	YW EPD	MILK	SEN	REA/CWT	ACT. IMF
+0	+2.3	+27	+43	+28	+11	1.01	1.89
Dam's Information		TEAT/UDDER	CE	DIS	BONSMA	FLESH	
Provided by SVR		45/40	1	1	2	4	

Cow Bull. We think this breeding makes tremendous sense. On the topside, we have Traveler crossed with Emulation. On the bottom side, there's a nice blend of maternal influence with carcass quality. This type of mating has worked well. We've also combined two cows with longevity of a combined 28 years in our tough range environment and excellent fertility.

SVR 79 SVR FOREVER 4148 ERIC 8251F

Birth Date: 5-2-2018

Bull *19563336

Tattoo: 8251F

SVR Eric Forever 4148
+*18317668

#Candolier Forever 376
+Coleman Dixie Erica 143

SVR Erica of Rose 694-0571
18902957

Brillium of Wye UMF 9685
+BAX Aspen Lady 694-72

CE	BW EPD	WW EPD	YW EPD	MILK	SEN	REA/CWT	ACT. IMF
+6	-.3	+12	+22	+20	+19	1.18	1.26
Dam's Information		TEAT/UDDER	CE	DIS	BONSMA	FLESH	
Provided by SVR		45/45	1	1	3	3	

One of the youngest Heifer Bulls in the sale, bred for longevity and maternal goodness from a dam who is ten and a granddam who was 15. If you analyze modern Angus bloodlines as the Association did in "By the Number; Parental Influence" in the June 2018 Angus Journal, you'll see that Lot 79 contains five of the top ten contributors to the Angus breed in his pedigree. He represents our thesis: We would rather be in the middle and concentrate historically proven cattle rather than breed the latest outlier that may . . . or may not . . . work and will ultimately return to the middle.

SVR 77 SVR RANGER 2051 KINOCHE 8244F

Birth Date: 5-1-2018

Bull 19604301

Tattoo: 8244F

SVR Range Master 2051
+*17685371

+Sinclair Bush Ranger 9X16
+BAX Alicia Queen 784-6310

SVR K Bty of Rose 8XE46-1510
18855873

+Sinclair Bush Ranger 9X16
Sinclair K Bty 8XE46 6MB15

CE	BW EPD	WW EPD	YW EPD	MILK	SEN	REA/CWT	ACT. IMF
+11	-2.6	+23	+39	+26	+11	1.06	1.62
Dam's Information		TEAT/UDDER	CE	DIS	BONSMA	FLESH	
Provided by SVR		45/45	1	1	2	3	

Heifer Bull prospect that is the result of a half sib mating to concentrate the strength of maternal goodness of Bush Ranger 9X16 to be able to offer a package as close to the original as possible. Lot 77 should sire females that type and kind comparable to Shadow/Bush Ranger that are long spined, easy keeping, fertile, and good uddered. The addition of Ambush 2172, Canadian Collosal, and 4465 should help bolster the muscle and growth in his sons!

SVR 80 SVR EMULATION 4240 BLK 8257F

Birth Date: 5-7-2018

Bull 19563363

Tattoo: 8257F

SVR 844 Cornerstone 4240
*18279670

*SVR Cornerstone of Rose 1112
#+BAX Aspen Lady 844-72

SVR Blkbird of Rose 9XB5-1517
19115841

*BAX Embury 97-844
Sinclair Blackbird 9XB5 103K

CE	BW EPD	WW EPD	YW EPD	MILK	SEN	REA/CWT	ACT. IMF
-3	+3.0	+33	+54	+22	+13	1.11	2.08
Dam's Information		TEAT/UDDER	CE	DIS	BONSMA	FLESH	
Provided by SVR		45/45	1	1	3	4	

We bred this Cow Bull to concentrate Bonsma characteristics, longevity and goodness of our own Foundation Donor 844, with 5522 and F0203. 844 was 14 and 3F1 is 17 years on his sire's side. Lot 80's dam is 9 and her dam is 11 years old. Both are still producing.

SVR 78 SVR EUREKA Z284 ENCH 8247F

Birth Date: 5-2-2018

Bull 19563200

Tattoo: 8247F

Limestone Eureka Z284
17229474

#*OCC Eureka 865E
+OCC Pollyanna 669U

SVR Enchantress 3F1-4543
+18910685

#Candolier Forever 376
+SCC Enchantress 3F1 X412

CE	BW EPD	WW EPD	YW EPD	MILK	SEN	REA/CWT	ACT. IMF
+6	+4	+31	+51	+24	+12	1.07	2.16
Dam's Information		TEAT/UDDER	CE	DIS	BONSMA	FLESH	
Provided by SVR		45/45	1	1	3	4	

Proven and predictable mating produced this Cow Bull. Lot 78 had a three-quarters brother and two full brothers in blood sell last year to Ellsworth Ranch, SD and Olson Ranch, NE! His intensely linebred Ohlde sire, Z284, has produced great cows. 4506 pictured to the right with her calf as a first calf heifer is a prime example. We have over 25 of Z284's daughters working in our herd, many of them by either Candolier Forever 376 or 5522 with pedigrees that are very similar to Lot 78.



SVR QUEEN OF ROSE 2517-4506 WITH HER HEIFER CALF Sired BY SVR RANGE MASTER 2051 AT SIDE.

SVR RANGER 2051 EDDA 8258F

81

Birth Date: 5-7-2018

Bull 19563216

Tattoo: 8258F

SVR Range Master 2051
+*17685371

+Sinclair Bush Ranger 9X16
+BAX Alicia Queen 784-6310

SVR Ladylda of Rose 688-2554
+18902970

Shoshone Beauigan Jgeca 27
Lady Ida 92 of Volga 0688

BW
81
ADJ. 205
422
ADJ. SC
30.70

CE	BW EPD	WW EPD	YW EPD	MILK	SEN	REA/CWT	ACT. IMF
+3	-1	+13	+20	+20	+19	1.13	1.83
Dam's Information	TEAT/UDDER	CE	DIS	BONSMA	FLESH		
Provided by SVR	45/45	1	1	3	4		

This Heifer Bull is a prime example of the Emulation/Shoshone cross. His sire and dam are both products of our E.T. program and their donor dams were both in production past 14 years of age.



SVR CHURCHILL C/STONE 4206 IS A RESIDENT SIRE AT THE ARABIA RANCH, WOOD LAKE, NE. HE IS A MATERNAL BROTHER TO LOT 84 AND BRED IN A SIMILAR MANNER.

SVR CONTINUED 5189 K B 8264F

82

Birth Date: 5-8-2018

Bull 19563340

Tattoo: 8264F

SVR Continued Edda 5189
*18613036

+SVR Continued of Rose 1158
Lady Ida 92 of Volga 0688

SVR K Bty of Rose 5FA7-3585
18887829

*BAX Embody 97-844
Sinclair K Bty 5FA7 2040

BW
89
ADJ. 205
455
ADJ. SC
31.77

CE	BW EPD	WW EPD	YW EPD	MILK	SEN	REA/CWT	ACT. IMF
-2	+2.9	+20	+35	+17	+18	0.94	1.56
Dam's Information	TEAT/UDDER	CE	DIS	BONSMA	FLESH		
Provided by SVR	45/45	1	1	4	4		

This Cow Bull has the same pedigree similar to that of Lot 39. Lots 82 and 39 will make a fantastic multi-sire pasture set to add longevity and consistency in your herd.

SVR EXPRESS BLACK 8270F

84

Birth Date: 5-13-2018

Bull *19563187

Tattoo: 8270F

Sinclair Express 6V47
15497986

N Bar Emulation Ext A1747
N Bar Queen Mother SCC 2F11

Blackbird of Volga 0740
16195934

Churchill of Wye
Blackbird of Volga 9511

BW
79
ADJ. 205
541
ADJ. SC
34.12

CE	BW EPD	WW EPD	YW EPD	MILK	SEN	REA/CWT	ACT. IMF
+4	+3	+35	+51	+10	+17	1.15	1.64
Dam's Information	TEAT/UDDER	CE	DIS	BONSMA	FLESH		
Provided by SVR	45/40	1	1	2	2		

This Cow Bull should be a sale highlight. This is a natural calf by our 740 Foundation Female born after E.T. work. 740 is still in production at age 13. The Express sons are been popular, and his daughters are long spined and broody. Express walked out to pasture and dominated every day until he was 11. Look for this bull to add length, depth and spring of rib, fleshing ability, and add pounds to a set of calves. His daughters should also rise to the top.

SVR EMULATION4240 ERIC 8266F

83

Birth Date: 5-10-2018

Bull 19563333

Tattoo: 8266F

SVR 844 Cornerstone 4240
*18279670

*SVR Cornerstone of Rose 1112
#BAX Aspen Lady 844-72

SVR Erica of Rose 113-2532
+18929140

BAX Elite 16-4182
BAX Miranda Aspen 113-447

BW
81
ADJ. 205
490
ADJ. SC
31.80

CE	BW EPD	WW EPD	YW EPD	MILK	SEN	REA/CWT	ACT. IMF
+2	+1.1	+26	+40	+19	+16	1.10	.85
Dam's Information	TEAT/UDDER	CE	DIS	BONSMA	FLESH		
Provided by SVR	35/35	1	1	3	3		

This prospective Cow Bull will add more Shoshone influence to a set of calves yet keep the growth and style of the 5522/Traveler/F0203 cross. He should breed true and leave long-lived, angular, productive cows and high selling uniform calves!

SVR RANGER 4112 JUANADA8276F

85

Birth Date: 5-17-2018

Bull 19563354

Tattoo: 8276F

SVR Proud Ranger 4112
18279672

+Sinclair Bush Ranger 9X16
Sinclair C Pride 8XE49 3G32

SVR JuanadaofRose E5403-4505
+18911291

Sitz Traveler 10619
+Indreland Juanada Anne 5403

BW
70
ADJ. 205
498
ADJ. SC
34.21

CE	BW EPD	WW EPD	YW EPD	MILK	SEN	REA/CWT	ACT. IMF
+8	-1.5	+18	+37	+24	+12	1.02	1.13
Dam's Information	TEAT/UDDER	CE	DIS	BONSMA	FLESH		
Provided by SVR	45/45	1	1	4	2		

This Heifer Bull is stacked EXT and 23-4 through 6807, two of the most influential animals in the Angus gene pool! QAS Traveler 23-4 was the bull with the largest contribution to the Angus breed's gene pool. His genome makes up almost 10% of every animal born today. After accounting for 23-4, N-Bar Emulation EXT adds another 7%. Together these two bulls account for 17% of the Angus gene pool. This bull represents our theory . . . it's better to breed with knowledge.

SVR EUREKA 3720 EDEN 8281F

86

Birth Date: 5-21-2018

Bull 19563205

Tattoo: 8281F

SVR Eureka Edda 3720
+*18297538

#*OCC Eureka 865E
+Sinclair Lady Ida 04F3 B154

SVR Eden of Rose 653-5524
+19117567

#RR Rito 707
FWR Lady Viking 653

BW
85
ADJ. 205
609
ADJ. SC
29.68

CE	BW EPD	WW EPD	YW EPD	MILK	SEN	REA/CWT	ACT. IMF
-1	+2.5	+41	+58	+21	+14	1.02	1.49

Dam's Information	TEAT/UDDER	CE	DIS	BONSMA	FLESH
Provided by SVR	45/45	1	1	4	3

This powerful Cow Bull is filled with red meat and muscle and balanced by two old Bonsma-style cows. He's a great blend of Rito, Emulation and Shoshone, which won the West! SVR RR Rito 707 Eden 5107, a flush mate to his dam, sold in 2017 and was selected for use by Hanson Registered Angus of MT and Littau Angus of SD. He's a great bull to transmit muscle and pounds, while producing long-sided, extended females.

SVR EMULATION4240 ERIC 8307F

89

Birth Date: 5-30-2018

Bull 19563228

Tattoo: 8307F

SVR 844 Cornerstone 4240
*18279670

*SVR Cornerstone of Rose 1112
#BAX Aspen Lady 844-72

SVR Erica of Rose 844-1597
+18902966

#OCC Emblazon 854E
#BAX Aspen Lady 844-72

BW
98
ADJ. 205
503
ADJ. SC
29.44

CE	BW EPD	WW EPD	YW EPD	MILK	SEN	REA/CWT	ACT. IMF
-6	+4.3	+32	+50	+20	+15	1.15	1.57

Dam's Information	TEAT/UDDER	CE	DIS	BONSMA	FLESH
Provided by SVR	45/40	1	1	3	2

We thought long and hard about keeping this Cow Bull for our own use, since his dam is a 9-year-old full sister to our grand Embodry 97 bull. He is a half sib mating to our foundation donor 844 cow, who produced until age 14. His maternal brother sold in 2019 to the Olson Ranch at Bartlett, NE.

SVR MODERATION EMMITT 8295F

87

Birth Date: 5-26-2018

Bull *19563201

Tattoo: 8295F

Sinclair Moderation 2M1
+17260282

N Bar Moderation 9957
N Bar Lady Ida X2912

SVR Emma of Rose 2422-0588
18556718

Brillium of Wye UMF 9685
Sitz Emma E 2422

BW
95
ADJ. 205
489
ADJ. SC
32.31

CE	BW EPD	WW EPD	YW EPD	MILK	SEN	REA/CWT	ACT. IMF
-5	+3.6	+30	+47	+20	+14	1.16	1.34

Dam's Information	TEAT/UDDER	CE	DIS	BONSMA	FLESH
Provided by SVR	45/45	1	1	3	4

A great N Bar pedigree that includes Wye and Traveler. The proven pedigree and daughter making ability of 2M1 combined with Lot 87's 10-year-old dam and a maternal granddam that was in production until age 12, should allow this young standout to produce long-lived, functional, low input range cows.

SVR RITO BLACK KING 8400F

90

Birth Date: 4-29-2018

Bull 19563318

Tattoo: 8400F

SVR Hundred Rito Black 3158
+17973298

Hundred Oaks Rito
Blackbird of Volga 0740

SVR QM of Rose 3589-5544
19085158

OCC Yancey 777Y
SVR QM of Rose 0507-3589

BW
70
ADJ. 205
450
ADJ. SC
34.47

CE	BW EPD	WW EPD	YW EPD	MILK	SEN	REA/CWT	ACT. IMF
+12	-1.3	+16	+25	+11	+23	1.07	2.64

Dam's Information	TEAT/UDDER	CE	DIS	BONSMA	FLESH
Provided by SVR	45/45	1	1	3	3

This is a great Heifer Bull Prospect who stacks the very best of maternal Angus genetics in Rito 149, F0203, Colleen of Wye, Homer, Realist (Homer's full brother) and several shots of E31. Longevity, sustainability and productivity are prepotent in Lot 90.

SVR FOREVER 4153 KINOC8296F

88

Birth Date: 5-26-2018

Bull 19563362

Tattoo: 8296F

SVR Forever Edda 4153
+*18317660

#Candolier Forever 376
+Sinclair Lady Ida 04F3 B154

SVR Range Queen K BTY 9XF2
17381487

Sinclair Frontiersman 6OC9
Sinclair K BTY 6PV53 4PH20

BW
95
ADJ. 205
507
ADJ. SC
33.33

CE	BW EPD	WW EPD	YW EPD	MILK	SEN	REA/CWT	ACT. IMF
+1	+1.3	+27	+48	+28	+12	1.04	2.29

Dam's Information	TEAT/UDDER	CE	DIS	BONSMA	FLESH
Provided by SVR	45/45	1	1	3	4

This Cow Bull truly represent Montana breeding. His dam is 11 years old and has produced some top end daughters and one sale bull.



EXTREME CALF VIGOR

Our Philosophy:

Profitability Through Functional Traits

We try to satisfy the needs of producers who demand low input, uniform, moderate-framed, thick, high quality cattle that are profitable. These cattle embody the essential, functional traits of the “traditional, old” Angus breed.

We determined that historically good, “old” Angus genetics represent the best essential traits of the breed. For us, the “old” genetics produce consistently good, uniform, fertile and efficient cattle – the hallmarks of profitability and functionality. We know the genetics that work on the range and for specific purposes because we have generations of proof, not just hypotheticals for bulls that do not have at least three generation in service, let alone one. In other words, we think “old” genetics work better in our environment and for our purpose.

The Association suggested that we should be able to compare in our environment and for our purposes the cattle we produce from “old” genetics to cattle produced from “modern” genetics. If our thesis is correct, the cattle produced from the “old” genetics should perform as well, better than, or nearly as well as cattle produced from “modern” genetics because the environmental drag should be less for our cattle.

To test our thesis, we have developed a “reference pod” in our herd that has been produced from some of the Angus breed’s most well-known, modern sires. We have done this, in part, because EPDs are based upon data generated from herds in different environments. Some of these herds are large; some small. Some are fed heavily; some are forage fed. There is also the possibility that EPDs can be skewed if data is turned in for relatively large number of cattle that are raised and fed in similar environments and there is a small data set from an environment like ours.

Thus, we are comparing our “old genetics” cattle to the “reference pod” of “modern” genetics cattle in our forage environment and for our purposes. To date, our cattle are out-performing the modern genetics cattle. We will have more data next year.

We worry that, the EPD system may have been made suspect. On July 7, 2017 the baseline of analysis was changed from an historical starting point of 1977 to a starting point (or baseline) of January 1, 2010. We have been advised that statistics from bulls born prior to 2010 have been eliminated from the calculation of EPDs, especially \$B. We respectfully disagree with that decision. In our judgment, there is simply no way that a sire born after 2010 can be truly and adequately evaluated until generations of his progeny have been evaluated.

If EPDs can be changed at any time the system may be inherently unreliable. On July 7, 2017 some of the “older, proven” bulls had their \$B EPD index drop by nearly 30%. Interestingly, before July 7, 2017, these bulls had the highest degree of accuracy, and were used successfully in many herds. If their pre-July 7 statistics . . . statistics with a supposed high degree of accuracy . . . can no longer be trusted, can any statistical analysis be trusted?

More troubling is that some of the post-2010, “new genetics” bulls had nearly 10% fluctuations in \$B values in just 100 days – from July 7, 2017 to October 23, 2017. This suggests that the EPDs of the unproven, post-2010, “new genetics” sires will fluctuate dramatically. Their impact will be unpredictable, at best, and may be potentially harmful. Only until they have produced generations of their own progeny can their statistics be deemed reliable.

The following table, using the terminal index \$B, illustrates the point:

Reg. No.	BD	Pre 7/7 \$B	Post 7/7 \$B	Change	% Change	10/23 \$B	Change 7/7 to 10/17	% Change	12/3 \$B	Change Pre 7/7 to 12/3	% Change pre 7/7 to 12/3
13739532	1/00	119.22	91.38	-27.84	-23%	90.28	-1.1	-1.2%	88	-31.22	-26%
15511451	3/06	152.56	131.56	-21.35	-14%	134.60	3.05	+2.0%	130	-22.56	-15%
15513367	3/06	177.3	132.41	-44.89	-25%	132.74	.33	+0.2%	122	-55.3	-31%
12811512	3/07	159.84	114.37	-45.47	-28%	114.6	0.23	+0.2%	128	-31.84	-20%
16295688	8/08	134.83	126.68	-8.15	-6%	127.8	1.21	+0.1%	124	-10.83	-8%
17016597	1/11	177.24	128.13	-49.11	-28%	124	-4.13	-3.2%	115	-32.24	-18%
17525526	3/13	-21.16	53.38	+74.54	+352%	46.99	-6.39	-12%	58	+79.16	+7895%
17774305	9/13	155.73	169.93	+14.2	+14.2%	151.4	-18.52	-11%	191	+35.27	+22.65

In addition, this information supports the view that data always returns to trend or to the middle. This supports our decision to breed to the middle.

Thus, we cannot, in good faith, market animals based solely upon EPDs. Rather, we believe that decades of proven performance, validated by certain EPDs, are a better measure. We prefer not to use terminal indices, such as \$B. Such indices simply do not measure the relevant maternal characteristics. Nor does one size fit all.

Moreover, we don't understand how traditional Angus genetics can be eliminated, since 50% of the supposed Angus gene pool comes from ten Angus cattle. In 2017, the Angus Foundation funded HiggsGene solutions to conduct research "to determine the most influential ancestors in the Angus breed." June 2018, *Angus Journal*, p. 34. Here are the contributions of the 30 most influential ancestors in order (see Table 1):

Table 1: Marginal contribution for the 30 most influential ancestors in order

Name	Gender	Date of birth	Marginal contribution, %	Cumulative contribution, %	No. progeny	No. descendants
Q A S Traveler 23-4	Male	1978	9.92	9.92	30,201	7,899,413
N Bar Emulation EXT	Male	1986	7.21	17.12	66,738	4,836,852
Tehama Bando 155	Male	1980	6.66	23.78	16,435	5,611,927
P S Power Play	Male	1977	5.31	29.09	27,295	8,544,906
B/R New Design 036	Male	1990	4.57	33.66	27,120	2,756,022
Pine Drive Big Sky	Male	1980	3.75	37.42	47,656	8,208,623
R R Rito 707	Male	1967	3.72	41.13	1,804	9,838,304
Schebrook Shoshone	Male	1971	3.40	44.54	15,113	9,028,430
Candolier Forever 376	Male	1972	3.23	47.77	798	7,847,354
Bemindful Maid D H D 0807	Female	1980	2.07	49.84	33	4,223,308
Hanton	Male	1852	1.84	51.68	21	20,680,632
Sitz Traveler 8180	Male	1990	1.71	53.39	12,694	1,946,153
Bon View Dora 56	Female	1986	1.45	54.83	25	2,520,803
Rito 9J9 of B156 7T26	Male	1979	1.44	56.27	3,025	4,466,614
Hoff Band 07 of S C 509	Female	1979	1.37	57.64	49	5,869,586
A A R New Trend	Male	1981	1.28	58.92	11,260	5,394,592
Rito 2100 G D A R	Male	1982	1.19	60.11	18,778	5,132,013
Blackcap Revolution	Male	1919	1.15	61.26	54	20,169,541
Eileenmere 85	Male	1933	1.04	62.30	287	19,079,370
Ankonian Dynamo	Male	1970	1.02	63.32	15,630	8,909,178
Baldrige Oscar	Male	1980	0.98	64.30	4,953	3,663,754
Ken Caryl Mr Angus 8017	Male	1977	0.87	65.17	16,472	7,313,872
Brost Elba 916	Female	1979	0.83	66.00	126	5,348,766
S S Objective T510 0T26	Male	2000	0.77	66.77	38,927	351,850
Emulous Bob of K Pride	Male	1960	0.74	67.51	1,737	11,506,956
Emulation 31	Male	1968	0.72	68.23	6,352	7,859,491
Paramont Ambush 2172	Male	1982	0.69	68.92	18,696	1,269,069
Evocate Princess T	Female	1962	0.66	69.57	13	6,571,361
Sitz Barbaramere Jet 2698	Female	1988	0.62	70.19	65	1,169,125
Puck of Wickwire	Male	1944	0.61	70.81	186	11,970,763

The research found that QAS Traveler 23-4 was the bull with the largest contribution to the Angus breed. "His genome makes up almost 10% of every animal born today." *Id.* Together, 23-4 and EXT make up 17% of the genome of every Angus. The top 10 animals in this chart account for 50% of the Angus breed.

Our view is that we should concentrate . . . line breed . . . the genetics set forth in this table. We do not think it appropriate to breed the outliers.

By focusing upon proven genetics, our feeder calves top the markets. Our registered seedstock is prepotent. Our "retail" customers who demand grass-fed and finished beef come back year after year and are increasing. Profitability measures are improving.

Our profitability measures include, but are not limited to, uniformity, cow survival ("longevity"), docility, mothering ability, heifer pregnancy, calving ease, structure including feet and legs, reproductive efficiency, teat and udder structure, carcass quality and REA as a percentage of CWT. (For example, we believe that REA as a percentage of CWT is a far more information measure than the present measure. We have been led to understand that REA as a percentage of CWT has been decreasing.)

Having said all of that, we are optimistic about a possible direction to be taken by the Association. In 2018, the Association conducted a survey of its members and commercial producers. A summary of the survey was presented at the Angus Convention and can be found here: <http://www.angus.org/Media/News/AngusConvention.aspx>.

Interestingly, the results of the survey tend to evidence our position: functional cow traits that lead to profitability are valued more by the producers than the traits stressed over the past several years. On November 27, 2018, the Association provided us with the summary (see Table 2) on page 24:

Table 2

Trait	Median Ranking (1 Most Important)
Cow Survival	4.5
Docility	5.2
Foot Score	5.5
Heifer Pregnancy	6.6
Weaning Weight	6.6
Calving Ease	6.6
Body Condition Score	7.5
Marbling Grade	7.7
Feedlot Efficiency	7.8
Milk	7.9
Feedlot Gain	9.1
Cow Mature Weight	9.8
Cow Frame Score	10.6
Yield Grade	10.7

The email covering the exchange concludes: "You can see that functional cow traits were heavily prioritized by the survey participants. Based on that feedback, we'll develop a more robust maternal index that includes more relevant traits than does our current \$W, and consider a balanced index that appropriately weights maternal and terminal traits." November 27, 2018 Email Exchange.

We applaud the Association's development of other measures. However, we don't understand what is meant by the phrase "balanced index that *appropriately* weights maternal and terminal traits."

One size cannot fit all. The needs of the southeastern Iowa farmer who can feed heavily are far different than the needs of the rancher in the semi-arid Sandhills.

That's why we developed our "reference pod" and our own data points -- to better predict cattle that will be profitable in our environment.

We hope that the reasons for our use of "older genetics" and the manner in which we score our animals makes sense. We want to produce functional, low input, profitable cattle. To do so, we will continue with using our own analytics until EPDs are developed that measure "consistently good, efficient, profitable

and uniform cattle" traits. Until then, we cannot, and will not, in good faith, market animals based solely upon EPDs. We prefer not to use terminal indices, such as \$B. Such indices simply do not measure the adequacy of cattle for a cow-calf producer. We believe that decades of proven performance, validated by certain EPDs, are a better measure.

These SVR Bulls and their mothers are sired by great sires that have decades and generations of predictable performance. The "old" sires produce animals that meet our criteria and function extraordinarily well on the range, on forage and for both the grass and commercial producers. These older sires are proven, their breeders know what worked, and we have their history. Moreover, although moderate in frame, they were thick-bodied animals known for producing high quality carcass progeny.

Emulation cattle provide unrivaled mothering ability, fertility, calving ease, superb teat and udder structure, survivability, adaptability and longevity in the ranch environment. Wye animals, which are original Aberdeen Angus, are highly maternal, transmit calving ease, have excellent carcass quality and marble on grass. Rito/Traveler transmits muscle, adds performance, helps carcass quality and provides appetite and gain.

These Bulls are not bred to measure the industry's aspirational statements. They are bred to create profitable, uniform, good and consistently *functional* cattle for you.

SVR

NOTES

SVR



Spring Valley Ranch & Cattle, L.L.C.
85445 444th Avenue
Bassett, NE 68714

PRSRT
FIRST CLASS
U.S. POSTAGE
PAID
St. Joseph, MO
Permit #2017



2020 ANGUS BULL SALE

Friday, February 7, 2020 • 1:00 p.m. (CST)
Burwell Livestock Market at Burwell, Nebraska

PLEASE BRING YOUR SALE BOOK TO THE SALE!